



**Fraserway RV**



**TRAVEL INSPIRATION GUIDE**



**VANCOUVER | CALGARY | EDMONTON | WHITEHORSE | TORONTO | HALIFAX**

# THE FRASERWAY DIFFERENCE



## Travel with confidence

- New and reliable fleet, maximum vehicle age is only 3 years
- Fully inspected by experienced technicians between rentals
- Replacement vehicles dispatched within 24 hours in the case of a breakdown



## Personalized Customer Service

- Experienced, friendly, multilingual staff
- Personalized vehicle demo and manuals in your language (English, German, Dutch, French)
- On-road support service
- Reservations available through tour operators in your country



## Everything You Need... Including The Kitchen Sink

- Available for a nominal fee our Convenience Kit includes items including but not limited to dishes, utensils and pots to things like a flashlight, hose, bedding, towels, a camping chair and much more.



## We've Got You Covered

- Family friendly, we offer vehicles with 3-point seatbelts for safer child-seat installation
- 5 Million liability coverage
- Comprehensive deductible waiver agreements



## The Extra Mile

- Maps, travel directories and more are available at each station. Please ask one of our customer service staff for details at time of check-in
- GPS devices available for rent



## Flexible Travel

- Pet friendly fleet
- One-way rentals available
- No surcharge for additional drivers and travel to the US



## Canada's Only National RV Dealer Group

- Family owned since 1969
- Coast to coast dealerships in event of needing on road support
- Largest RV dealer group in Canada



# INTRODUCTION

From the spectacular mountains on the west coast, to the untouched wilderness of the Yukon, and the beaches and Indian summer colours of Atlantic Canada, our spectacular country is waiting to be (re)discovered by you.

Whether you are looking for a romantic getaway with your partner, or a road trip with the entire family, our truck campers, van conversions and motorhomes are available to create unforgettable memories for you and your loved ones this year.

This Travel Inspiration Guide provides you with 20 different itineraries to help you explore our own country and support the local economy in many communities across the country. With the largest rental fleet in the country and rental locations coast to coast Fraserway RV is your vehicle to adventure!

We look forward to welcoming you at one of our rental stations this year!



**Departing from Vancouver:**

	<b>Duration</b>	<b>Page</b>
Banff and Jasper National Park	7 nights	5
Whistler, Mountains and Valleys	6 nights	7
Sunshine Coast and Vancouver Island	9 nights	9
Manning Park and the Okanagan Valley	7 nights	11

**Departing from Calgary:**

Banff and Jasper National Park	6 nights	13
Banff National Park and the Kootenays	7 nights	15
Waterton and the Kootenay Rockies	7 nights	17
Drumheller and the Badlands	7 nights	19

**Departing from Edmonton:**

Banff and Jasper National Park	7 nights	21
The Rocky Mountains and Interior BC	8 nights	23
The Badlands and Waterton	7 nights	25

**Departing from Whitehorse:**

Highlights of the Yukon (incl. Alaska)	10 nights	27
Dawson City and the Dempster Highway	8 nights	29
Golden Circle and Atlin	9 nights	31

**Departing from Toronto:**

1000 Islands and Algonquin Provincial Park	8 nights	33
Algonquin Provincial Park and Georgian Bay	7 nights	35
Ottawa, Montreal and Southern Quebec	8 nights	37

**Departing from Halifax:**

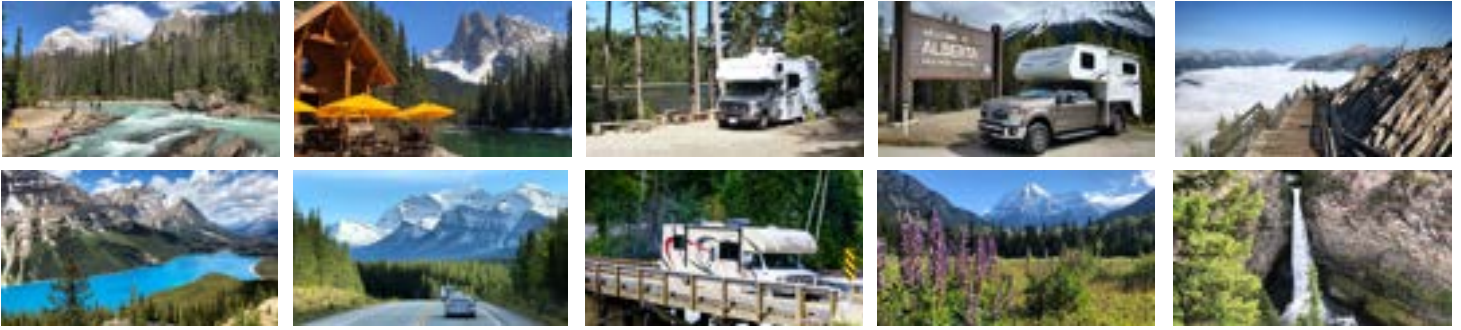
Nova Scotia	8 nights	39
New Brunswick	8 nights	41
Prince Edward Island and the Acadian Coast	8 nights	43



# BANFF AND JASPER NATIONAL PARK

Rental Location: Vancouver Duration: 7 nights Distance: 2,500 km

**FAVOURITE**



## Day 1: Vancouver to Revelstoke (575 km)

Pick up your RV in Delta in the morning and travel east on Highway 1. Once you pass the town of Hope you will leave the Fraser Valley and the Coquihalla Highway will start climbing into the mountains. Notice how the landscape is changing from dense forests to a wide-open valley once you pass the Coquihalla Summit and start descending into the Nicola Valley. Near Salmon Arm the highway will start following the shoreline of Shuswap Lake, providing you with some spectacular views along the way. Visit the ghost town and train museum at Three Valley Gap in the afternoon. Just before Revelstoke you can visit Craigellachie, the location where the last spike of the Canadian Pacific Railway was driven. Arrive in Revelstoke in the late afternoon.

### Nearby campgrounds:

Revelstoke Campground or Lamplighter Campground

## Day 2: Revelstoke to Lake Louise (250 km)

Continue east on Highway 1 and stop at the Rogers Pass Visitor Information Centre, where you can visit a great interpretive display of local wildlife or go for a short hike nearby. In Golden you will have the option to explore the new Skybridge, the highest suspension bridge in Canada. Keep an eye out for Bighorn sheep on the side of the highway after you depart Golden for Yoho National Park. This is the smallest of the four National Parks in the Canadian Rockies, but it is spectacular nonetheless! In the park you will visit Emerald Lake and Natural Bridge. Arrive at the Lake Louise village in the afternoon.

### Nearby campgrounds:

Lake Louise Campground or Caste Mountain Campground

## Day 3: Lake Louise to Banff (150 km)

Depart your campsite in the morning for the short drive to Lake Louise. After visiting Lake Louise continue to the nearby and even more spectacular Moraine Lake (seasonal). In the afternoon you will visit Bow Falls at the base of Sulphur Mountain in Banff, followed by a visit to the Banff Gondola for a spectacular 360 degrees panorama of the surrounding mountains. End the day by driving the Minnewanka Lake loop to Two Jack and Minnewanka Lake.

### Nearby campgrounds:

Tunnel Mountain or Two Jack

### Optional Excursion:

Sulphur Mountain Gondola

## Day 4: Banff to Jasper (325 km)

The 48-km Bow Valley Parkway provides visitors with a scenic and leisurely route between Banff and Lake Louise as an alternative to the busier Trans-Canada Highway. Here you may see elk, moose or wolves, while summer provides you with an opportunity to see black bears and grizzly bears. Option to hike to the Johnston Canyon and the Castle Mountain viewpoint. After this you will travel the Icefields Parkway, often considered one of the most scenic drives in Canada. Highlights of today include Bow Lake, Peyto Lake, the Athabasca Glacier and Athabasca Falls.

### Nearby campgrounds:

Whistlers or Wapiti Campground

### Optional Excursion:

Ice Explorer

## Day 5: Jasper (150 km)

Today will be spent exploring Jasper National Park. Visit Medicine Lake, Maligne Lake and Maligne Canyon in the morning. The road to Maligne Lake is one of the best places in the Rockies to see wildlife, including bears, moose and elk. Spend the afternoon exploring the town of Jasper or hike the 5-lakes trail or one of the other many hikes nearby.

### Nearby campgrounds:

Whistlers or Wapiti

### Optional Excursion:

Maligne Lake boat cruise



**Day 6: Jasper to Clearwater (325 km)**

Depart Jasper in the morning via the Yellowhead Highway towards Valemount. Pull in at the Mount Robson parking lot to admire, the highest mountain in the Canadian Rockies. Stop at the Visitor Information Centre in Valemount to see the salmon spawn in the nearby river (seasonal). Explore Wells Gray Provincial Park in the afternoon, home to a total of 41 named waterfalls. Spahat and Helmcken Falls are two of the easily accessible falls in the park, or you can hike to one of the more remote falls instead. Don't forget your mosquito spray during the summer months!

**Nearby campgrounds:**  
Dutch Lake or Clearwater KOA

**Day 7: Clearwater to Hope (350 km)**

Today you will continue to travel westbound with an optional stop in Merritt, the country music capital of Canada, and famous for its murals. Stop at Othello Tunnels for a short and easy hike to the old railway tunnels and bridges of the former Kettle Valley Railway. Hope is known as the Chainsaw Carving Capital of Canada with impressive pieces of art throughout the town. Hope is also the location where Rambo: First Blood was filmed in the fall of 1981. Fans of the movie can still visit many of the film locations today!

**Nearby campgrounds:**  
Coquihalla Campground or Kawkawa Campground

**Day 8: Hope to Vancouver (150 km)**

Return your RV to the rental station before 11:30 am.



**Useful websites:**

[www.bcparks.com](http://www.bcparks.com)  
[www.parkscanada.com](http://www.parkscanada.com)  
[www.hellobc.com](http://www.hellobc.com)

[www.hopebc.ca](http://www.hopebc.ca)  
[www.tourismrevelstoke.com](http://www.tourismrevelstoke.com)  
[www.banfflakelouise.com](http://www.banfflakelouise.com)

[www.jasper.travel](http://www.jasper.travel)  
[www.wellsgray.ca](http://www.wellsgray.ca)

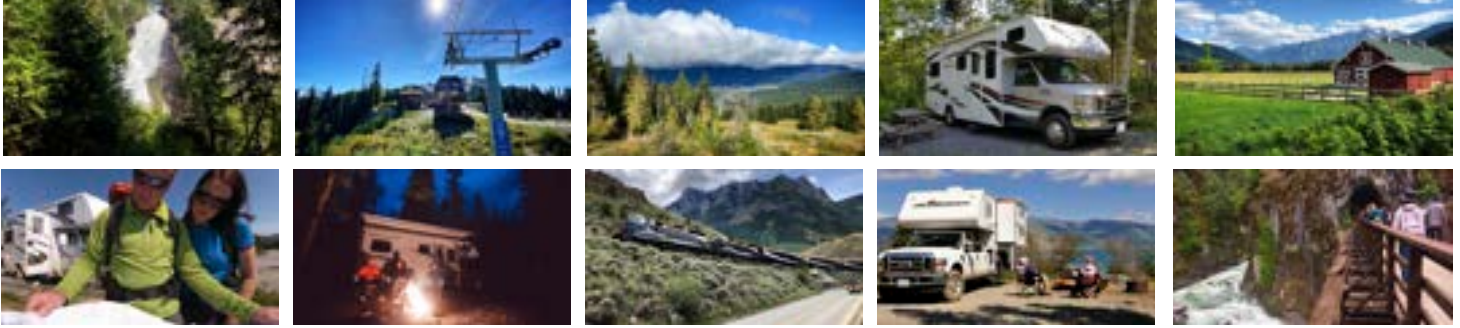
**Disclaimer:**

While we endeavour to keep the information up to date and correct, we make no representations or warranties of any kind, express or implied, about the completeness, accuracy, reliability, suitability, or availability. Any reliance you place on such information is therefore strictly at your own risk. Travellers are advised to confirm with each third party prior to arrival. The inclusion of any suggestions does not necessarily imply a recommendation or endorse the views expressed within them.



# WHISTLER, MOUNTAINS AND VALLEYS

**Rental Location:** Vancouver **Duration:** 7 nights **Distance:** 1,100 km



## Day 1: Vancouver to Whistler (150 km)

Pick up your RV in Delta in the morning and drive towards Squamish on the spectacular Sea to Sky highway. Along the way stop at Porteau Cove situated on the shores of the Howe Sound. This is the most southern fjord in North America. After leaving Porteau Cove the highway will start climbing into the mountains, and it will quickly become clear why this highway is called the Sea to Sky! A short stroll will take you to a beautiful viewpoint at Shannon Falls, the third-highest waterfall in BC! Your final stop before arriving in Whistler will be at Brandywine Falls for a short and easy hike to the viewpoint.

### Nearby campgrounds:

Whistler RV Park or  
Riverside RV

## Day 2: Whistler (50 km)

Today will be a free day to explore Whistler. Take in the spectacular scenery from above by traveling travelling on the Peak-2-Peak gondola and the new Suspension Bridge at the top of Whistler Mountain. In the afternoon, hike to Lost Lake or challenge yourself on one of the longer hikes. If you are looking for a bigger adrenaline rush you can opt to go ziplining, bungee jumping or biking. Stroll the pedestrian-only village and consider visiting the Squamish Lillooet Cultural Center to learn more about the local First Nations culture.

### Nearby campgrounds:

Whistler RV Park or  
Riverside RV

## Day 3: Whistler to Birkenhead Lake (100 km)

Depart Whistler in the morning and travel north on Highway 99 towards Nairn Falls. After stopping at Nairn Falls, explore the town of Pemberton and stock up on groceries before travelling further north to the spectacular Birkenhead Lake Provincial Park. At Birkenhead, you will find a spectacular lake, and an old-growth forest with black bears, grizzlies and mountain goats. There is no store at the lake, so be sure to bring enough (food) supplies for the day.

### Nearby campgrounds:

Birkenhead Lake Provincial  
Park Campground

## Day 4: Birkenhead Lake to Cache Creek (225 km)

Depart your campsite in the morning and continue your trip on the Duffy Lake Road towards Lillooet. Option to stop for a hike at Joffre Lakes, or take in the views at the roadside stops at Duffy Lake and Seton Lake. Continue to Lillooet, which was once the heart of the Fraser Canyon Gold Rush and the largest town west of Chicago and north of San Francisco at that time. Stop at Pavillion Lake before arriving in Cache Creek.

### Nearby campgrounds:

Historic Hat Creek Ranch or  
Brookside Campground

## Day 5: Cache Creek to Kamloops (150 km)

Cache Creek's Horstings Farm Market is famous for its freshly baked pies, local produce and tasty sandwiches, so it's a great stop before leaving town! Follow the Thompson River to Kamloops with a photo opportunity stop at Kamloops Lake. Your campsite will be located outside of Kamloops, so stop in town for groceries. Take the more scenic Highway 5A instead of the Coquihalla Highway to reach your campsite if staying at the Quilchena Resort at Douglas Lake Ranch.

### Nearby campgrounds:

Quilchena Resort or Lac Le  
Jeune Provincial Park





**Fraserway RV**

Your Vehicle to Adventure™

**Day 6: Kamloops to Merritt (75 km)**

Visit the town of Merritt after departing your campsite in the morning. Merritt is located in the heart of the Nicola Valley and is known as the country music capital of Canada. The town is also famous for its murals depicting famous country music singers from across North America. In the afternoon you will travel through cattle country and rolling grasslands to arrive at the sparkling turquoise waters of Kentucky Lake. Here you will feel like you are in the Caribbean without even leaving British Columbia!

**Nearby campgrounds:**  
Kentucky-Alleyne Provincial Park

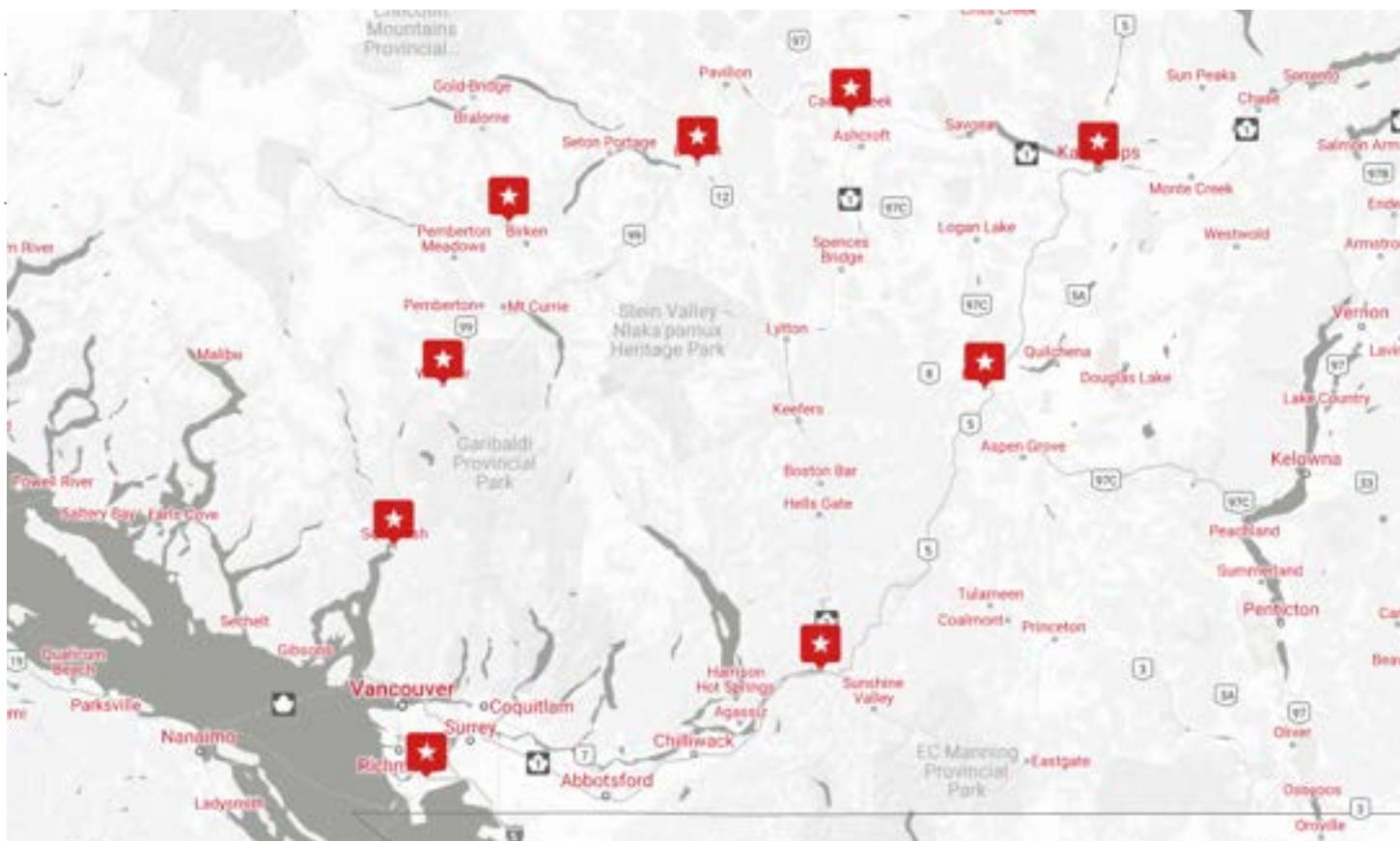
**Day 7: Merritt to Hope (160 km)**

Enjoy some time at the lake before departing your campsite later in the morning. Stop at Othello Tunnels for a short and easy hike to the old railway tunnels and bridges of the former Kettle Valley Railway. Hope is known as the Chainsaw Carving Capital of Canada with impressive pieces of art throughout the town. Hope is also the location where Rambo: First Blood was filmed in the fall of 1981. Fans of the movie can still visit many of the film locations today!

**Nearby campgrounds:**  
Coquihalla campground or Hope Valley RV Park

**Day 8: Hope to Vancouver (150 km)**

Depart from Hope in the morning for the final stretch of your trip. Return your RV to the rental station before 11:30 am.



**Useful websites:**

[www.exploresquamish.com](http://www.exploresquamish.com)  
[www.whistler.com](http://www.whistler.com)  
[www.bcparks.com](http://www.bcparks.com)

[www.lillooet.ca](http://www.lillooet.ca)  
[www.douglaslake.com](http://www.douglaslake.com)  
[www.tourismmerritt.ca](http://www.tourismmerritt.ca)

[www.hopebc.ca](http://www.hopebc.ca)  
[www.hellobc.com](http://www.hellobc.com)

**Disclaimer:**

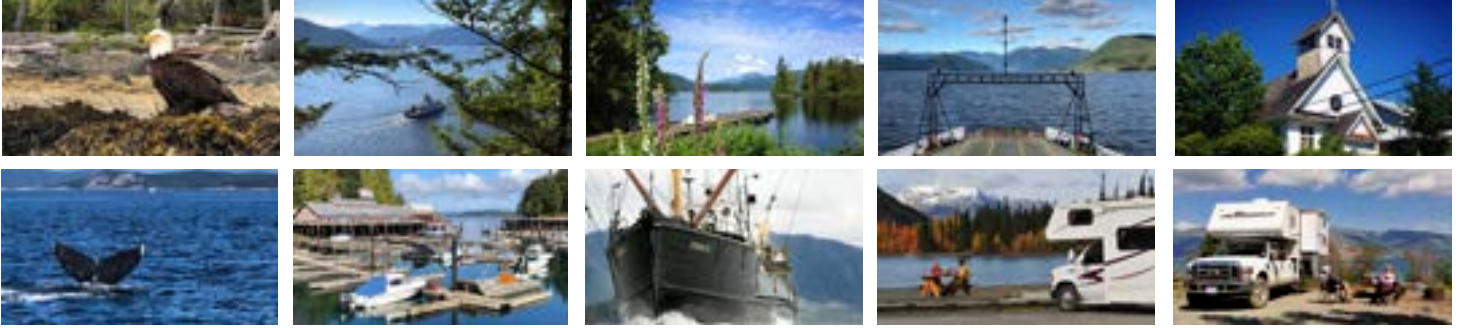
While we endeavour to keep the information up to date and correct, we make no representations or warranties of any kind, express or implied, about the completeness, accuracy, reliability, suitability, or availability. Any reliance you place on such information is therefore strictly at your own risk. Travellers are advised to confirm with each third party prior to arrival. The inclusion of any suggestions does not necessarily imply a recommendation or endorse the views expressed within them.





# SUNSHINE COAST AND VANCOUVER ISLAND

**Rental Location:** Vancouver **Duration:** 9 nights **Distance:** 1,300 km



## Day 1: Vancouver to Sechelt (100 km)

Pick up your RV in the morning and travel to Horseshoe Bay for the ferry to the Sunshine Coast. This 40-min ferry ride provides some spectacular views of Howe Sound and the Coast Mountains. Explore the waterfront and village at Gibson's Landing upon your arrival on the Sunshine Coast. After this, you will travel further north on Highway 101 to arrive in Sechelt where you will spend the night. Enjoy a beautiful sunset over the Sechelt Inlet or walk along Sechelt's waterfront in the evening.

### Nearby campgrounds:

Bayside Campground or Porpoise Bay Provincial Park

## Day 2: Sechelt to Lund (150 km)

Follow the Sunshine Coast highway north. Enjoy the short hike to Skookumchuck Narrows to witness one of the largest tidal waves in the world. If you are lucky you might see some whitewater kayakers playing on the waves. After this scenic stop, it is just a short drive to the Earl's Cove ferry terminal, where you will embark on another beautiful ferry ride to Saltery Bay. This ferry is free of charge for northbound travel. The town of Powell River is beautifully located on the Upper Sunshine Coast. Be sure to stop by Townside Brewing to pick up some local craft beer for tonight! You will end the day in the picturesque seaside village of Lund.

### Nearby campgrounds:

SunLund by-the-Sea or Okeover Arm Provincial Park

## Day 3: Lund to Campbell River (125 km)

Depart Lund in the morning and board the ferry to cross the Strait of Georgia between Powell River and Comox on Vancouver Island. Travel the scenic Old Island Highway (19A) to make your way to Campbell River. This highway will take you through several scenic oceanside communities. Option to go on a scenic hike to the Elk Falls Suspension Bridge in the afternoon.

### Nearby campgrounds:

Elk Falls Provincial Park or Miracle Beach Provincial Park

## Day 4: Campbell River to Gold River (100 km)

Today you will venture off the beaten path to travel towards the west coast of Vancouver Island. The village of Gold River has limited options to purchase groceries, so stock up before you leave Campbell River. Highway 28 is one of the most scenic highways on Vancouver Island, and will take you to several beautiful spots along the way, including Lupin Falls. Detour along Buttle Lake to visit Lower Myra Falls, and Lady Falls.

### Nearby campgrounds:

Gold River Municipal Campground or Muchalat Lake Provincial Park

## Day 5: Gold River (10 km)

A day cruise onboard the MV Uchuck III is an absolute highlight of this trip. Enjoy a full day on the water to explore this remote part of Vancouver Island. Stops are made along the route (as required) at camps and settlements in the area to deliver supplies and passengers. This trip is offered on selected days of the week only, so make sure you plan ahead.

### Nearby campgrounds:

Gold River Municipal Campground or Muchalat Lake Provincial Park

## Day 6: Gold River to Telegraph Cove (300 km)

Travel to Telegraph Cove via Campbell River. Please do not attempt to travel Nimkish Road with your RV, as this road is inaccessible with your rental RV. Telegraph Cove has a rich and colourful past and is one of the last boardwalk settlements left on the Island. A century ago there was only a telegraph shack from which loggers, fishermen and pioneers would stay in touch with the outside world. It grew a little bigger when a fish saltery, sawmill, school and general store were built over the years.

### Nearby campgrounds:

The Forest RV Campground and Telegraph Cove Marina and RV Park



**Day 7: Telegraph Cove to Port Alice (75 km)**

Venture further off the beaten path to Port Alice, a short and scenic drive on the newly paved Highway 30. The Village of Port Alice is a picturesque community built on a mountainside offering excellent views of Neroutsos Inlet from every vantage point. You can often see eagles, bears, whales, otters and seals right from the doorstep of your RV.

**Nearby campgrounds:**  
Port Alice Oceanfront RV Park

**Day 8: Port Alice to Qualicum Beach (350 km)**

Today you will travel southbound again. Don't forget to stop at the Nimpkish Valley Ecological Reserve and marvel at what's left of the area's magnificent old-growth trees, some are 360 years old! In the early afternoon, you will arrive in Cumberland, a former mining town that almost became a ghost town has now become a bustling Vancouver Island community and a mecca for mountain bikers.

**Nearby campgrounds:**  
Whiskey Creek RV Park or Rath Trevor Beach

**Day 9: Qualicum Beach to Vancouver (150 km)**

Depart to Nanaimo in the morning for the 1 hour and 40 minute ferry ride back to Vancouver. Enjoy the afternoon free at leisure to walk the waterfront in Vancouver, visit Granville Island and shop for souvenirs in the historic Gastown. FlyOver Canada is a unique flight simulator that takes passengers on a coast-to-coast flight across the country, where you will see numerous cities and vistas from above. This 30-min activity is located at Canada Place and accessible for all ages!

**Nearby campgrounds:**  
Burnaby RV or Capilano RV Park

**Day 10: Vancouver (25 km)**

Return the RV to the rental office before 11:30 am.



**Useful websites:**

[www.bcferries.com](http://www.bcferries.com)  
[www.bcparks.com](http://www.bcparks.com)  
[www.sunshinecoasttravel.com](http://www.sunshinecoasttravel.com)

[www.campbellriver.travel](http://www.campbellriver.travel)  
[www.vancouverislandnorth.ca](http://www.vancouverislandnorth.ca)  
[www.vancouverisland.travel](http://www.vancouverisland.travel)

[www.hellobc.com](http://www.hellobc.com)  
[www.tourismvancouver.com](http://www.tourismvancouver.com)

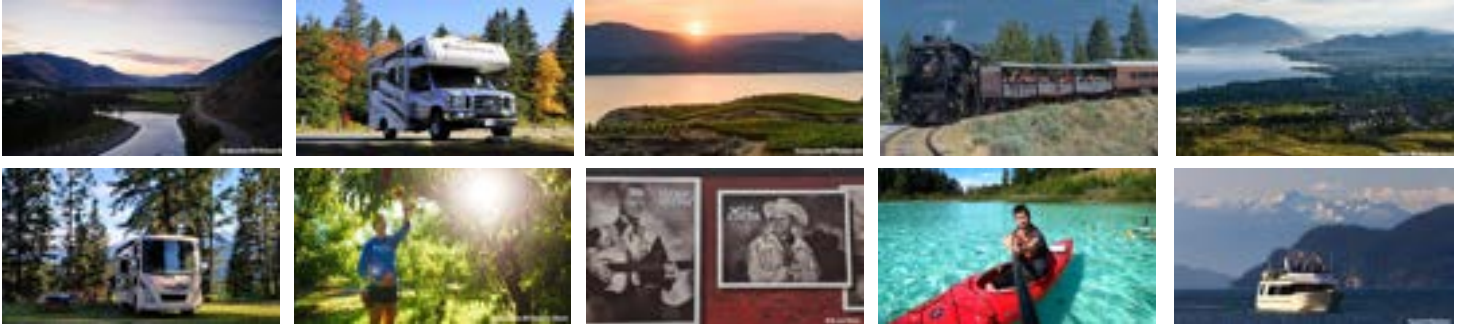
**Disclaimer:**

While we endeavour to keep the information up to date and correct, we make no representations or warranties of any kind, express or implied, about the completeness, accuracy, reliability, suitability, or availability. Any reliance you place on such information is therefore strictly at your own risk. Travellers are advised to confirm with each third party prior to arrival. The inclusion of any suggestions does not necessarily imply a recommendation or endorse the views expressed within them.



# MANNING PARK AND THE OKANAGAN VALLEY

**Rental Location:** Vancouver **Duration:** 7 nights **Distance:** 1,000 km



## Day 1: Vancouver to Manning Park (225 km)

Pick up your RV in the morning and travel eastbound to Hope. Remember to stop in Hope to stock up on groceries if you haven't done so already. Just outside of Hope on Highway 3 you can see the aftermath of the Hope Slide. This landslide occurred in the morning hours of January 9, 1965, and was the second-largest recorded landslide in Canadian history. After that, continue on the Crowsnest Highway towards Manning Park. This Provincial Park is home to over 100 species of alpine and subalpine wildflowers. Visitors are treated to a spectacle of blooms and colour at Manning Park that starts in the spring, builds to its peak in July, and continues through to fall. Arrive at your campsite in Manning Park in the afternoon.

### Nearby campgrounds:

Lightning Lake or Hampton campground

## Day 2: Manning Park to Osoyoos (180 km)

Continue your trip on the Crowsnest Highway as it follows the Similkameen River upstream. The town of Hedley was once considered one of BC's richest mining areas. Nowadays, Hedley is more known for its quaint streets, unique attractions and friendly eateries. As you continue driving further east you will notice that the highway around Keremeos is lined with fruit stands. This self-titled "fruit stand capital of Canada" is mostly known for its agriculture, horticulture, ranching and winemaking. Arrive in Osoyoos in the late afternoon.

### Nearby campgrounds:

Nk'Mip RV Park or Brookvale Holiday Resort

## Day 3: Osoyoos to Summerland (75 km)

This region is home to the only desert in Canada, so this morning you can visit the Desert Centre in Osoyoos to learn more about this unique ecosystem. Walk the 1.5 kilometer elevated boardwalk to learn about the flora and fauna and enjoy scenic views of the desert landscape. As you travel northbound you will see countless vineyards and wineries along the way. Most wineries welcome the public to witness the wine-making process and to sample some of their wines.

### Nearby campgrounds:

Okanagan Lake Provincial Park

## Day 4: Summerland to Kelowna (50 km)

In Summerland, you can travel on the last remaining section of the historic Kettle Valley Railway, built between 1910 – 1915. During the 90-minute journey, you will travel on a restored steam locomotive as it rolls through the picturesque Prairie Valley dotted with orchards, vineyards and fields of green. The train journey continues onto the Trout Creek Bridge with a stunning view of Okanagan Lake and the canyon below. This train journey operates on selected days of the week only, so be sure to plan ahead! After the train journey is over you will head back to your RV for the drive to Kelowna.

### Nearby campgrounds:

Bear Creek Provincial Park or Orchard Hill RV Park

## Day 5: Kelowna (50 km)

A very scenic portion of the former Kettle Valley Railway runs along the steep-walled Myra Canyon near Kelowna. Originally built by hand at the turn of the last century, this impressive landmark is highlighted by 2 tunnels and 18 trestle bridges that are too spectacular for words. You can either rent a bike or explore part of the trail on foot. If relaxing by the lake is more your thing, you can enjoy the day on one of the many beaches along Okanagan Lake instead.

### Nearby campgrounds:

Bear Creek Provincial Park or Orchard Hill RV Park





**Fraserway RV**

Your Vehicle to Adventure™

**Day 6: Kelowna to Kentucky Lake (100 km)**

Today will be another short driving day, ending with spectacular views at one of BC's little-known gems! Travel through cattle country and rolling grasslands along the Okanagan Connector to arrive at the sparkling turquoise waters of Kentucky Lake. Here you will feel like you are in the Caribbean without even leaving British Columbia! From the newly developed campsite, it is a short walk to the nearby Alleyne Lake.

**Nearby campgrounds:**

Kentucky-Alleyne Provincial Park

**Day 7: Kentucky Lake to Harrison Hot Springs (200 km)**

This morning it is just a short drive to Merritt, located in the heart of the Nicola Valley, and known as the country music capital of Canada. The town is also famous for its murals depicting famous country music singers from across North America. Arrive at Harrison Hot Springs in the afternoon to enjoy some time at the lake or relax at the Hot Springs Resort for the last evening of your trip.

**Nearby campgrounds:**

Harrison Springs RV Park or Hicks Lake

**Day 8: Harrison Hot Springs to Vancouver (125 km)**

Depart Harrison Hot Springs in the morning and return your rental RV to Fraserway RV before 11:30 in the morning.



**Useful websites:**

[www.bcparks.com](http://www.bcparks.com)  
[www.hellobc.com](http://www.hellobc.com)  
[www.similkameenvalley.com](http://www.similkameenvalley.com)

[www.manningpark.com](http://www.manningpark.com)  
[www.destinationsoyoos.com](http://www.destinationsoyoos.com)  
[www.tourismkelowna.com](http://www.tourismkelowna.com)

[www.kettlevalleyrail.org](http://www.kettlevalleyrail.org)  
[www.tourismharrison.com](http://www.tourismharrison.com)

**Disclaimer:**

While we endeavour to keep the information up to date and correct, we make no representations or warranties of any kind, express or implied, about the completeness, accuracy, reliability, suitability, or availability. Any reliance you place on such information is therefore strictly at your own risk. Travellers are advised to confirm with each third party prior to arrival. The inclusion of any suggestions does not necessarily imply a recommendation or endorse the views expressed within them.



# BANFF AND JASPER NATIONAL PARK

**Rental Location:** Calgary **Duration:** 7 nights **Distance:** 1,750 km



## Day 1: Airdrie to Banff (150 km)

Pick up your RV in Airdrie in the morning and head west on Highway 1 towards the mountains. Upon your arrival in Banff, you can park in the designated RV parking lot near the train station and explore the village on foot. Arrive at your campsite in Banff National Park in the late afternoon.

### Nearby campgrounds:

Tunnel Mountain or Two Jack Campground

## Day 2: Banff (50 km)

The entire day will be spent exploring the many highlights in and around Banff. Start the day with a visit to Bow Falls just outside of town, followed by a gondola ride up to the top of Sulphur Mountain. Here you will have a breathtaking 360-degree panorama of the surrounding mountains and the valley below. After lunch drive to Surprise Corner for a spectacular view of the Banff Springs Hotel, also known as Banff's castle in the mountains. From here continue to the Hoodoos just up the road. End by driving the Minnewanka Loop, with stops at Two Jack Lake and Minnewanka Lake.

### Nearby campgrounds:

Tunnel Mountain or Two Jack Campground

## Day 3: Banff to Icefields Parkway (225 km)

Depart Banff in the morning via the Trans-Canada Highway (Highway 1) towards Lake Louise but leave the highway to merge onto the Bow Valley Parkway just west of Banff. The 48 km long Bow Valley Parkway runs parallel to Highway 1 but provides visitors a more scenic and leisurely route between Banff and Lake Louise. Along the way, you can stop for a hike at the Johnston Canyon and take a photo at the Castle Mountain viewpoint. After this visit Lake Louise and Moraine Lake, two of the most spectacular lakes in the Canadian Rockies. Continue northbound on the Icefields Parkway with stops at Bow Lake, Peyto Lake, the Big Bend and the Athabasca Glacier. Spend the night at one of the campsites along the route.

### Nearby campgrounds:

Wilcox Creek or Icefields Centre RV

### Optional Excursion:

Icefield Explorer

## Day 4: Icefields Parkway to Jasper (125 km)

Travel further north on the Icefields Parkway, with countless scenic views along the way. Approximately 25 km further north you will find Athabasca Falls, which is one of Canada's most powerful waterfalls, due to the sheer volume of water flowing into the gorge from the Athabasca River, fed by the massive Columbia Icefield. There are several platforms and walkways where you can safely view and photograph the falls. Near the northern end of the Icefields Parkway lies the Valley of the Five Lakes, with a 4.5 km hiking trail connecting the five lakes. Jasper is the world's largest dark sky preserve making for stunning star gazing at night.

### Nearby campgrounds:

Whistlers or Wapiti Campground

## Day 5: Jasper (150 km)

Today will be spent exploring the Maligne Valley just south of the town of Jasper. The only road in and out of the valley is one of the best places in the Rockies to see a variety of wildlife. Start the day with a stop at Medicine Lake, this lake is famous for its disappearing water. During the summer months, it looks like a normal lake, but in fall and winter the water disappears, and it becomes not much more than a mudflat. Continue further south to reach Maligne Lake at the end of the valley. Enjoy a 1-hour guided boat tour to Spirit Island for the best views of the lake.

### Nearby campgrounds:

Whistlers or Wapiti Campground



On your way back to Jasper stop at Maligne Canyon. This is the deepest canyon in Jasper National Park, with a depth of more than 50 metres in some areas. Hikers of all abilities can explore this incredible natural landmark by crossing six bridges built across various points of the canyon.

**Day 6: Jasper to Canmore (325 km)**

Today you will travel the Icefields Parkway in the opposite direction back towards Banff, allowing for more spectacular stops along the way. Sunwapta Falls consists of upper and lower waterfalls that are fed by the Athabasca Glacier. The upper falls, which are easily accessed from the viewpoint parking lot, have an impressive drop-off of about 18 metres. Park at Waterfowl Lakes for a scenic hike along these two less-visited lakes. About 100 km south of Jasper is the Stutfield Glacier Lookout, providing one of the most spectacular glacier views in the Rockies. A mere five minutes further south lies Tangle Creek Falls, a waterfall with a series of smaller drops. The Vermillion Lakes viewpoint provides one last view of Banff National Park before your arrival in Canmore.

**Nearby campgrounds:**  
Bow River Campground or  
Spray Lakes West

**Day 7: Canmore to Airdrie (125 km)**

Depart Canmore in the morning and return your RV at Fraserway RV in Airdrie before 11:30 am.



**Useful websites:**

[www.banfflakelouise.com](http://www.banfflakelouise.com)  
[www.albertaparks.ca](http://www.albertaparks.ca)  
[www.parksCanada.ca](http://www.parksCanada.ca)

[www.pursuitcollection.com](http://www.pursuitcollection.com)  
[www.jasper.travel](http://www.jasper.travel)  
[www.exploreCanmore.ca](http://www.exploreCanmore.ca)

[www.travelAlberta.com](http://www.travelAlberta.com)

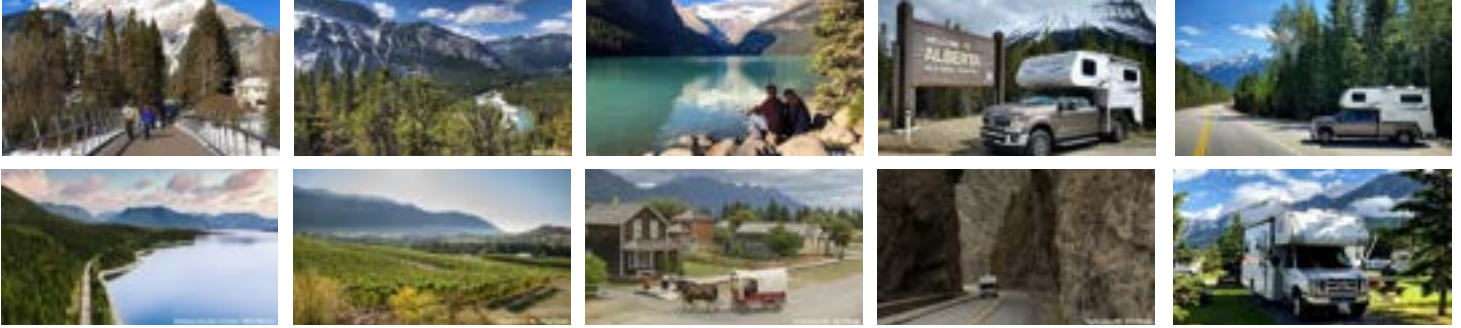
**Disclaimer:**

*While we endeavour to keep the information up to date and correct, we make no representations or warranties of any kind, express or implied, about the completeness, accuracy, reliability, suitability, or availability. Any reliance you place on such information is therefore strictly at your own risk. Travellers are advised to confirm with each third party prior to arrival. The inclusion of any suggestions does not necessarily imply a recommendation or endorse the views expressed within them.*



# BANFF NATIONAL PARK AND THE KOOTENAYS

**Rental Location:** Calgary **Duration:** 7 nights **Distance:** 1,750 km



## Day 1: Calgary to Banff (150 km)

Pick up the RV in Airdrie in the morning and head west on Highway 1 towards the mountains. Upon your arrival in Banff, you can park in the designated RV parking lot near the train station and explore the village on foot. Arrive at your campsite in Banff National Park in the late afternoon.

### Nearby campgrounds:

Tunnel Mountain or Two Jack Campground

## Day 2: Banff (50 km)

The entire day will be spent exploring the many highlights in and around Banff. Start the day with a visit to Bow Falls just outside of town, followed by a gondola ride up to the top of Sulphur Mountain. Here you will have a breathtaking 360 degree panorama of the surrounding mountains and the valley below. After lunch drive to Surprise Corner for a spectacular view of the Banff Springs Hotel, also known as Banff's castle in the mountains. From here continue to the Hoodoos just up the road. End the day by driving the Minnewanka Loop, with stops at Two Jack Lake and Minnewanka lake.

### Nearby campgrounds:

Tunnel Mountain or Two Jack Campground

## Day 3: Banff to Revelstoke (300 km)

Depart Banff in the morning via the Trans-Canada Highway (Highway 1) towards Lake Louise but leave the highway to merge onto the Bow Valley Parkway just west of Banff. The 48 km Bow Valley Parkway runs parallel to Highway 1 but provides visitors a more scenic and leisurely route between Banff and Lake Louise. Along the way, you can stop for a hike at the Johnston Canyon and take a photo at the Castle Mountain viewpoint. Visit Lake Louise and Moraine Lake. Shortly after departing Lake Louise in a westbound direction, you will arrive in Yoho National Park, where you will visit Emerald Lake and Natural Bridge. On your way to Revelstoke, you do not want to miss the stop at Information Centre at Rogers Pass. Upon arrival in Revelstoke, you can visit the Revelstoke Dam, one of the largest hydroelectric dams in Canada.

### Nearby campgrounds:

Snowforest Campground or Revelstoke Campground

## Day 4: Revelstoke to Nelson (250 km)

Travel south from Revelstoke and board a small ferry for the 20 minute crossing of Upper Arrow Lake. Nestled deep within the natural beauty of the Kuskanaax Valley you will find the Nakusp Hot Springs. There are two pools fed by water from natural mineral springs originating from the forest a short distance away. After a relaxing soak in the hot spring pools, you will drive along the shoreline of Slokan Lake to arrive in Nelson in the afternoon.

### Nearby campgrounds:

Davis Creek campground or Lost Ledge Campground

## Day 5: Nelson to Fernie (325 km)

Cross the Kootenay Pass, one of the highest highway accessible points in Canada to make your way to the Creston Valley. Explore the town of Creston or enjoy one of the many outdoor activities like canoeing or hiking, or a visit to one of the local wineries. You will arrive in Fernie later in the afternoon, where small-town charm meets adventure in the heart of the Canadian Rocky Mountains.

### Nearby campgrounds:

Fernie RV Resort or Mount Fernie Provincial Park





**Fraserway RV**

Your Vehicle to Adventure™

**Day 6: Fernie to Invermere (225 km)**

Travel to Invermere, with stops at the Fort Steele Heritage Town, Columbia Lake Provincial Park and Dutch Creek Hoodoos. The past lives and breathes at Fort Steele Heritage Town. This well-preserved town is perched on the western slopes of the Rocky Mountains since its gold rush beginnings in 1864. According to K'tunaxa legend, the Hoodoos represent the rib cage of a huge sea monster known as Yawu?nik.

**Nearby campgrounds:**

The Raven's Nest Resort or Fairmont Hot Springs Resort

**Day 7: Invermere to Canmore (175 km)**

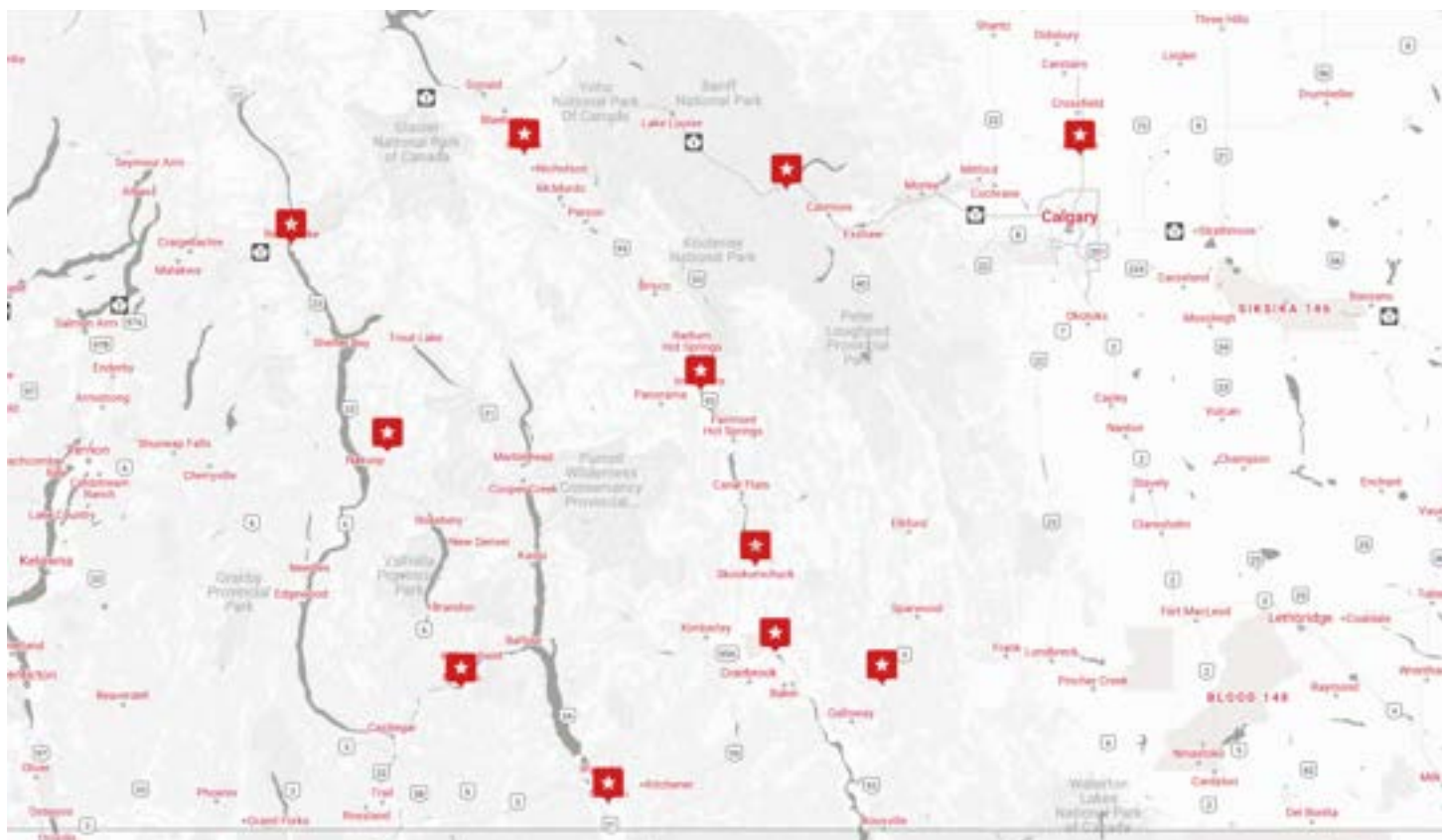
Travel the Banff-Invermere Highway, which will take you through the Sinclair Canyon and to the impressive Kootenay Valley viewpoint, where you will have breathtaking views of the Mitchell and Vermilion mountain ranges. The highway continues through Kootenay National Park, the least visited National Park in the Canadian Rockies, opting to go for a 1.6 km walk at Marble Canyon.

**Nearby campgrounds:**

Bow Valley Provincial Park or Three Sisters Campground

**Day 8: Canmore to Airdrie (125 km)**

Depart Canmore in the morning. West of Calgary you can visit the Calgary Olympic Park, one of the venues of the 1988 Winter Olympics that took place in Calgary. Return your RV to Fraserway RV in Airdrie before 11:30 am.



**Useful websites:**

[www.bcparks.com](http://www.bcparks.com)  
[www.albertaparks.com](http://www.albertaparks.com)  
[www.parkscanada.com](http://www.parkscanada.com)

[www.hellobc.com](http://www.hellobc.com)  
[www.tourismrevelstoke.com](http://www.tourismrevelstoke.com)  
[www.banfflakelouise.com](http://www.banfflakelouise.com)

[www.tourismfernie.com](http://www.tourismfernie.com)  
[www.kootenayrockies.com](http://www.kootenayrockies.com)

**Disclaimer:**

While we endeavour to keep the information up to date and correct, we make no representations or warranties of any kind, express or implied, about the completeness, accuracy, reliability, suitability, or availability. Any reliance you place on such information is therefore strictly at your own risk. Travellers are advised to confirm with each third party prior to arrival. The inclusion of any suggestions does not necessarily imply a recommendation or endorse the views expressed within them.

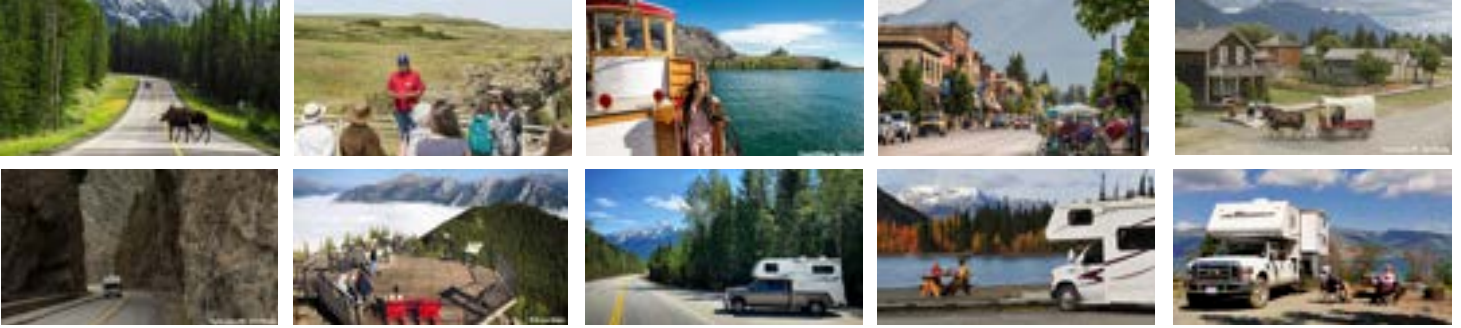
Calgary





# WATERTON AND THE KOOTENAY ROCKIES

**Rental Location:** Calgary **Duration:** 7 nights **Distance:** 1,250 km



## Day 1: Calgary to Kananaskis (125 km)

Pick up your RV in Airdrie in the morning and travel west on Highway 1 towards Canmore. Take Exit 118 to merge onto the Kananaskis Trail (Highway 40). Consider stopping at the Kananaskis Visitor Information Centre for assistance planning the next two days of your trip. Widow Maker, Barrier Lake and Ribbon Creek are some of the scenic stops along the highway as you travel through several smaller provincial parks. Discover the adventure that awaits you in Peter Lougheed Provincial Park further south. The interpretive trails will reveal the natural and cultural histories of the Kananaskis area. Stop by Boundary Ranch to see horses in the pasture and view buffalo in their paddock.

### Nearby campgrounds:

Interlakes Campground or Lower Lake Campground

## Day 2: Kananaskis to Fort Macleod (300 km)

Continue southbound on Highway 40/541 towards the town of Longview. Here in the foothills of the Rocky Mountains, the Old West is still evident in the art, history, food, hospitality, and culture of the foothill's residents. Along the way, you are likely to see cowboys out herding cattle, sometimes right along the highway and families out for a horseback ride. Visit the Head-Smashed-In Buffalo Jump Interpretive Centre in the afternoon. This UNESCO-designated World Heritage Site preserves and interprets over 6,000 years of Plains Buffalo culture. Spend the night at one of the nearby campsites.

### Nearby campgrounds:

Oldman River Campground or Daisy May Campground

## Day 3: Fort Macleod to Waterton (125 km)

Clear lakes, thundering waterfalls, rainbow-coloured streams, colourful rocks and mountain vistas await hikers and sightseers in Waterton National Park. The park has 200 kilometres of hiking trails, ranging from easy strolls to strenuous wilderness hikes. The park is a particularly good place to enjoy a variety of shorter trails which can be easily completed in a few hours. Step aboard the historic M.V. International, the oldest passenger ship still operating in Canada, and take in breathtaking scenery on a 2-hour scenic cruise. View majestic towering cliffs and beautiful waterfalls while learning more about the Park and the interconnected ecosystems.

### Nearby campgrounds:

Belly River Campground or Townsite Campground

## Day 4: Waterton to Fort Steele (250 km)

Depart the town of Waterton in the morning and travel north to Pincher Creek. Today's spectacular drive will take you from Waterton through the Alberta Plains and The Frank Slide Interpretive Centre overlooks Canada's deadliest rockslide. See and hear first-hand what happened here the night Turtle Mountain fell on April 29, 1903. In Sparwood visit the world's largest tandem axle truck, known as the Terex Titan, a 350 ton truck. The town of Fernie is where small-town charm meets adventure in the heart of the Canadian Rocky Mountains. Fernie has a thriving cultural scene, the enthusiasm of a vibrant youthful population and a scenic, tranquil location.

### Nearby campgrounds:

Fort Steele Resort & RV Park or Fort Steele Campground

## Day 5: Fort Steele to Radium (125 )

Visit the Fort Steele Heritage Town in the morning, where the past lives and breathes! Enjoy old-time trade demonstrations, steam-train rides and Clydesdale horse-drawn wagon tours! Try gold panning, watch live theatre and street performances, and observe the museum displays. The start of this Gold Rush town dates back to 1864.

### Nearby campgrounds:

Dry Gulch Provincial Park or Redstreak Campground



In the early afternoon travel North on the Kootenay Highway (Highway 93) towards Columbia Lake, the source of the Columbia River. At the north end of Columbia Lake, the Dutch Creek Hoodoos are the result of thousands of years of glaciation, followed by erosion from meltwater and weather.

**Day 6: Radium to Banff (150 km)**

Travel the Banff-Invermere Highway, which will take you through the Sinclair Canyon and to the impressive Kootenay Valley viewpoint, where you will have breathtaking views of the Mitchell and Vermilion mountain ranges. The highway continues through Kootenay National Park, the least visited National Park in the Canadian Rockies, opting to go for a 1.6 km walk at Marble Canyon.

**Nearby campgrounds:**  
Tunnel Mountain or Two Jack Campground

**Day 7: Banff (100 km)**

The entire day will be spent exploring the many highlights in and around Banff. Start the day with a visit to Bow Falls just outside of town, followed by a gondola ride up to the top of Sulphur Mountain. Here you will have a breathtaking 360 degrees panorama of the surrounding mountains and the valley below. After lunch drive to Surprise Corner for a spectacular view of the Banff Springs Hotel, also known as Banff's castle in the mountains. From here continue to the Hoodoos just up the road. End by driving the Minnewanka Loop, with stops at Two Jack Lake and Minnewanka Lake.

**Nearby campgrounds:**  
Tunnel Mountain or Two Jack Campground

**Day 8: Banff to Calgary (150 km)**

Depart Canmore in the morning and return your RV at Fraserway RV in Airdrie before 11:30 am.



- Useful websites:**  
[www.parkscanada.com](http://www.parkscanada.com)  
[www.albertaparks.ca](http://www.albertaparks.ca)  
[www.headsmashedin.ca](http://www.headsmashedin.ca)

- [www.mywaterton.ca](http://www.mywaterton.ca)  
[www.fortsteele.ca](http://www.fortsteele.ca)  
[www.kootenayrockies.com](http://www.kootenayrockies.com)

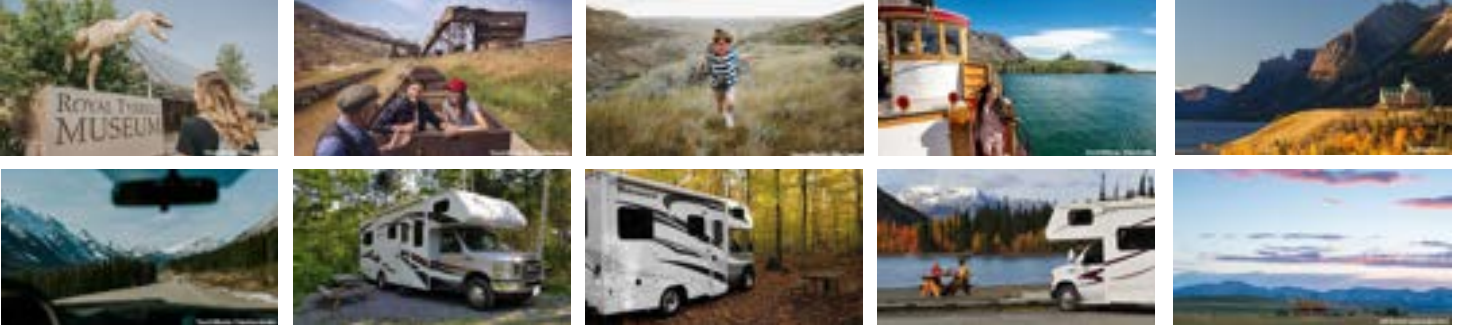
[www.banfflakelouise.com](http://www.banfflakelouise.com)

**Disclaimer:**  
 While we endeavour to keep the information up to date and correct, we make no representations or warranties of any kind, express or implied, about the completeness, accuracy, reliability, suitability, or availability. Any reliance you place on such information is therefore strictly at your own risk. Travellers are advised to confirm with each third party prior to arrival. The inclusion of any suggestions does not necessarily imply a recommendation or endorse the views expressed within them.



# DRUMHELLER AND THE BADLANDS

**Rental Location:** Calgary **Duration:** 7 nights **Distance:** 1,750 km



## Day 1: Airdrie to Drumheller (125 km)

Pick up your RV in Airdrie in the morning and head east via Highway 567, until it merges with Highway 9. Approximately 17 km west of Drumheller, Horseshoe Canyon is an eye-popping sight. Get a first impression of this majestic landscape from the viewing platforms at the top of the canyon. Option to enjoy a longer, scenic hike down into the canyon. Arrive in Midland Provincial Park in the afternoon. The park was once the site of the Midland Coal Mine and is the perfect base to explore Drumheller.

### Nearby campgrounds:

Midland Provincial Park or Badlands Campground

## Day 2: Drumheller (100 km)

Witness one of the world's largest displays of dinosaurs at the Royal Tyrrell Museum in the morning. The nearby Horseshoe Canyon is where bright yellow canola fields and giant rocking pump jacks meet the precipice of pure Badlands splendor. Stand at the canyon edge and take in the entire valley down below. Just 10 kilometers southeast of Drumheller lies the tiny village of Wayne, once a thriving coal-mining town of more than 3,000. You will reach the town after crossing eleven single lane, wooden bridges and passing countless abandoned homes and mining equipment along the way. The historic Last Chance Saloon still serves visitors. Stop at the 117-meter long Star Mine suspension bridge over the Red Deer River on your way back to the campsite.

### Nearby campgrounds:

Midland Provincial Park or Badlands Campground

## Day 3: Drumheller to Dinosaur Provincial Park (175 km)

The area was once home to no less than 139 different mines, but nowadays the Atlas Coal Mine National Historic Site is the only place dedicated to preserving the days when "Coal was King" in the Drumheller Valley. The Tipple, Tunnel and Train tours tell amazing stories of the miners from around the world who came here to seek their fortunes. Continue your trip to Dinosaur Provincial Park, the largest and most spectacular area of badlands in Canada. The unique riverside habitat includes extensive groves of plains cottonwood trees that provide critical living space for many bird species.

### Nearby campgrounds:

Dinosaur Campground or Steveston Bridge Campground

## Day 4: Dinosaur Provincial Park to Medicine Hat (125 km)

Travel south on Highway 876 to reach the Trans-Canada Highway (Highway 1). Continue southeast to reach the city of Medicine Hat, where you can visit the world's largest Teepee. The visitor centre offers guided first nation tours to learn about the indigenous history through the eyes of a local guide. Medicine Hat has a rich industrial history, and the historic Clay district illustrates the combination of factors that led to Medicine Hat's emergence as the largest supplier of clay products west of Ontario.

### Nearby campgrounds:

Gas City Campground or Old Baldy Campground

## Day 5: Medicine Hat to Lethbridge (175 km)

Depart Medicine Hat in the morning for the 2 hour drive to Lethbridge. Railway enthusiasts can visit the Galt Historic Railway Park via a short detour. The Lethbridge Viaduct is a massive steel trestle over the Oldman River designed by the Canadian Pacific Railway. It is the largest railway structure in the country. The Nikka Yuko Japanese Garden is a hidden gem in southern Alberta and exhibits a traditional teahouse, bell tower, gates and bridges.

### Nearby campgrounds:

Park Lake Campground or Elbas Farms RV Park



**Day 6: Lethbridge to Waterton (175 km)**

Depart Lethbridge Via Highway 3 to reach Head-Smashed-In Buffalo Jump Interpretive Centre in the morning. This UNESCO-designated World Heritage Site preserves and interprets over 6,000 years of Plains Buffalo culture. Continue south to Pincher Creek, from where Highway 6 will take you to the town of Waterton.

**Nearby campgrounds:**  
Belly River Campground or  
Townsite Campground

**Day 7: Waterton (25 km)**

Clear lakes, thundering waterfalls, rainbow-coloured streams, colourful rocks and mountain vistas await hikers and sightseers. With an exceptional diversity of wildlife and wildflowers and a cozy little waterfront town to serve as a home base to explore the National Park today. Waterton Lakes National Park has 200 kilometres of hiking trails, ranging from easy strolls to strenuous wilderness hikes. The park is a particularly good place to enjoy a variety of shorter trails which can be easily completed in a few hours. Step aboard the historic M.V. International, the oldest passenger ship still operating in Canada, and take in breathtaking scenery on a 2-hour scenic cruise. View majestic towering cliffs and beautiful waterfalls while learning more about the Park and the interconnected ecosystems.

**Nearby campgrounds:**  
Belly River Campground or  
Townsite Campground

**Day 8: Waterton to Airdrie (300 km)**

Depart Waterton in the morning and take the Cowboy Trail (Highway 22) back towards Calgary. Here in the foothills of the Rocky Mountains, the Old West is still evident in the art, history, food, hospitality, and culture of the foothill's residents. Along the way, you are likely to see cowboys out herding cattle, sometimes right along the highway. Return your RV to Fraserway RV in Airdrie before 11:30 am



**Useful websites:**  
[www.parkscanada.com](http://www.parkscanada.com)  
[www.albertaparks.ca](http://www.albertaparks.ca)

[www.traveldrumheller.com](http://www.traveldrumheller.com)  
[www.tourismmedicinehat.com](http://www.tourismmedicinehat.com)

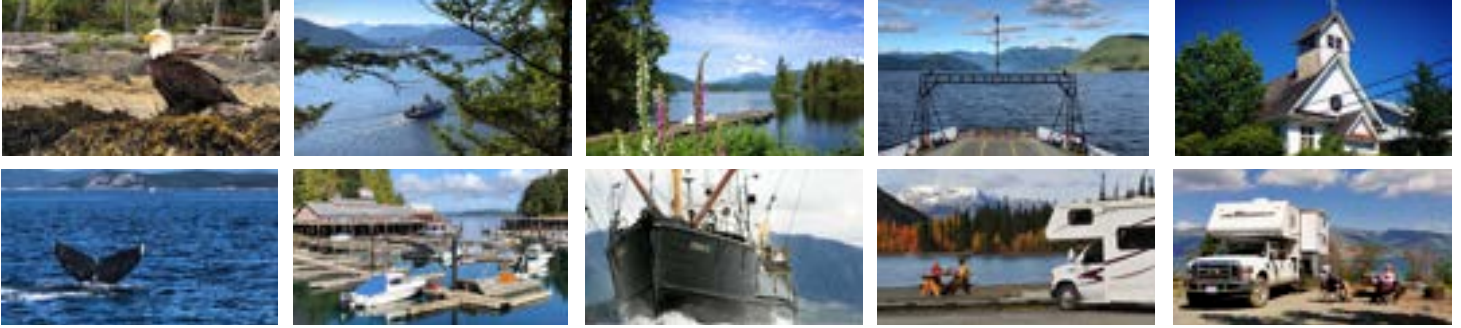
[www.tourismlethbridge.com](http://www.tourismlethbridge.com)  
[www.mywaterton.ca](http://www.mywaterton.ca)

**Disclaimer:**  
While we endeavour to keep the information up to date and correct, we make no representations or warranties of any kind, express or implied, about the completeness, accuracy, reliability, suitability, or availability. Any reliance you place on such information is therefore strictly at your own risk. Travellers are advised to confirm with each third party prior to arrival. The inclusion of any suggestions does not necessarily imply a recommendation or endorse the views expressed within them.



# BANFF AND JASPER NATIONAL PARK

**Rental Location:** Edmonton **Duration:** 7 nights **Distance:** 1,500 km



## Day 1: Edmonton to Hinton (350 km)

Pick up your RV in Leduc in the morning and head west on Highway 16 towards the mountains. As you approach the city of Edson, the first mountain tops of the Rockies will appear in the distance. The Beaver Boardwalk in Hinton is the world's longest freshwater boardwalk and is a great family outing that showcases the local wetland system around Maxwell Lake. West of Hinton, merge onto Highway 40 North towards William A. Switzer Provincial Park. Here you can visit lesser-known sights like Kelly's Bathhtub and Jarvis Lake, or hike the Athabasca Lookout trail.

### Nearby campgrounds:

Gregg Lake Campground or Jarvis Lake Campground

## Day 2: Hinton to Jasper (200 km)

Continue on the Yellowhead Highway towards Jasper. The highway follows the Athabasca River upstream. Before the town of Jasper, turn left to make your way into the Maligne Valley. Here you will visit Maligne Canyon, Medicine Lake and Maligne Lake. The Maligne Lake Road is one of the best places in the Rockies to see wildlife, including bears, moose and elk. At Maligne Lake, located at the southern end of the valley, you can board a boat for a 60-minute guided tour to Spirit Island, or explore the lake by canoe. When you are ready to leave the Maligne Valley, return via the same route to Jasper. In Jasper, a walk at either Patricia or Pyramid Lake can provide beautiful sunset views.

### Nearby campgrounds:

Whistlers or Wapiti Campground

## Day 3: Jasper to Icefields Parkway (150 km)

In the morning enjoy one of the many hikes near Jasper, for example around the Valley of the Five Lakes. For a more relaxing experience take the Jasper SkyTram up Whistler mountain, the longest guided aerial tramway in Canada. From Jasper head south down the Icefields Parkway, making sure to stop at the many spectacular viewpoints. Walk around the easily accessible Athabasca Falls and a bit further up the road visit the Sunwapta Falls. Sunwapta means "turbulent water", and this is especially true in early summer when water levels rise due to melting snow and ice.

### Nearby campgrounds:

Snowforest Campground

## Day 4: Icefields Parkway to Lake Louise (150 km)

Continue further south on the Icefields Parkway, stopping at Waterfowl Lakes along the way. Do not miss stops like Peyto and Bow Lake as you travel through this spectacular landscape full of rugged mountains. At the southern end of the Icefields Parkway merge onto Highway 1 West to travel towards Yoho National Park. Stop at the Spiral Tunnel viewpoint to see the Canadian Pacific Railway make its way up the Kicking Horse Pass. Turn right towards Emerald Lake shortly after passing the town of Field. After enjoying time at the spectacular Emerald Lake, stop at the nearby Natural bridge on your way to your campsite.

### Nearby campgrounds:

Lake Louise Campground or Caste Mountain Campground

## Day 5: Lake Louise to Banff (100 km)

Visit Lake Louise and Moraine Lake in the morning. You might be required to park the RV in the overflow parking and take a shuttle bus to the lake during peak times. Upon arrival in Banff head up to Sulphur Mountain for a short gondola ride that will reward you with spectacular views of the valley below and the surrounding mountain ranges. At the base of the gondola, you can soak in the hot water of the Upper Hot Springs.

### Nearby campgrounds:

Tunnel Mountain or Two Jack Campground



**Day 6: Banff (50 km)**

The entire day will be spent exploring the many highlights in and around Banff. Start with the short drive to the Minnewanka Loop, where you can stop at Two Jack Lake and Minnewanka Lake. After this continue towards the town of Banff to visit the many restaurants and gift stores on Banff Avenue. On your way back to the campsite stop at surprise Corner for a spectacular view of the Banff Springs Hotel, also known as Banff's castle in the mountains. From here continue to the Hoodoos just up the road before arriving back at your campsite.

**Nearby campgrounds:**

Tunnel Mountain or Two Jack Campground

**Day 7: Banff to Gull Lake (400 km)**

When heading back towards Lake Louise, take the Bow Valley Parkway instead of Highway 1. The parkway runs parallel to the highway but offers more scenic views and a better chance to spot wildlife. At Johnston Canyon, a short hike provides magnificent views of the river and waterfall. Head back up the Icefields Parkway for a different view of the mountains and turn onto the David Thompson Highway towards Rocky Mountain House at the Saskatchewan River Crossing. Stop at the many rest stops along the route, especially for beautiful views around Abraham Lake. Head to Gull Lake as you leave the Rockies behind.

**Nearby campgrounds:**

Aspen Beach Lakeview Campground

**Day 8: Gull Lake to Edmonton (110 km)**

Start your day by enjoying a walk through the Aspen Beach Park, or the beaches of Gull Lake. Return your RV to Fraserway RV in Leduc before 11:30 am.



**Useful websites:**

[www.travelalberta.com](http://www.travelalberta.com)  
[www.explorehinton.org](http://www.explorehinton.org)  
[www.jasper.travel](http://www.jasper.travel)

[www.albertaparks.ca](http://www.albertaparks.ca)  
[www.parkscanada.ca](http://www.parkscanada.ca)  
[www.pursuitcollection.com](http://www.pursuitcollection.com)

[www.explorecanmore.ca](http://www.explorecanmore.ca)  
[www.banfflakelouise.com](http://www.banfflakelouise.com)

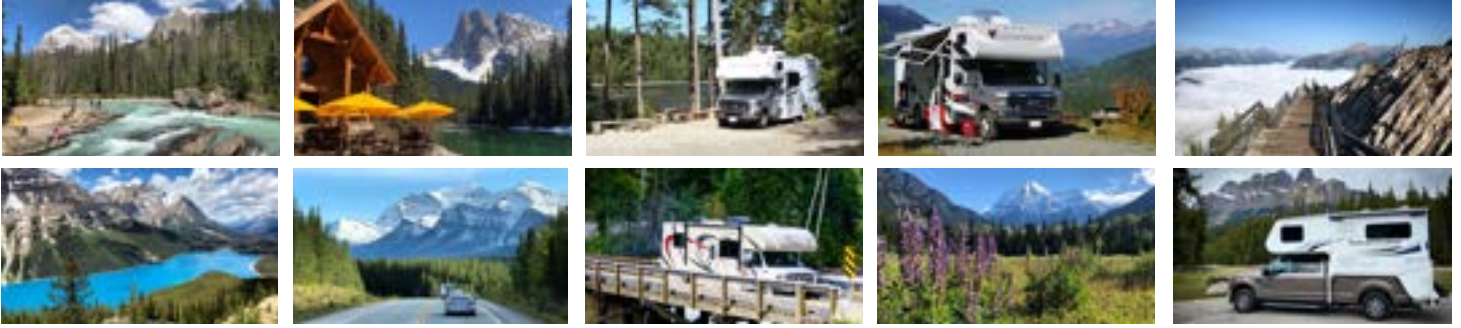
**Disclaimer:**

While we endeavour to keep the information up to date and correct, we make no representations or warranties of any kind, express or implied, about the completeness, accuracy, reliability, suitability, or availability. Any reliance you place on such information is therefore strictly at your own risk. Travellers are advised to confirm with each third party prior to arrival. The inclusion of any suggestions does not necessarily imply a recommendation or endorse the views expressed within them.



# THE ROCKY MOUNTAINS AND INTERIOR BC

**Rental Location:** Edmonton **Duration:** 8 nights **Distance:** 2,200 km



## Day 1: Leduc to Jasper (400 km)

Pick up your RV in Leduc in the morning and travel westbound on the Yellowhead Highway (Highway 16) towards Jasper. Miette Hot Springs feature the hottest hot springs in the Canadian Rockies. The natural hot springs water flows from the mountain at 54°C (129°F), the water is then cooled to a comfortable temperature of 40°C (104°F) as it enters the hot springs pool.

### Nearby campgrounds:

Whistlers or Wapiti  
Campground

## Day 2: Jasper (150 km)

Today will be spent exploring Jasper National Park. Visit Medicine Lake, Maligne Lake and Maligne Canyon in the morning. The road to Maligne Lake is one of the best places in the Rockies to see wild-life, including bears, moose and elk. Spend the afternoon exploring the town of Jasper or hike the 5-lakes trail or any of the other many hikes nearby.

### Nearby campgrounds:

Whistlers or Wapiti  
Campground

## Day 3: Jasper to Clearwater (325 km)

Depart Jasper in the morning via the Yellowhead Highway towards Valemount. Pull in at Mount Robson, the highest mountain in the Canadian Rockies. Stop at the Visitor Information Centre in Valemount to see the salmon spawn in the nearby river (seasonal). Explore Wells Gray Provincial Park in the afternoon, home to a total of 41 named waterfalls. Spahat and Helmcken Falls are two of the easily accessible falls in the park, or you can hike to one of the more remote falls instead.

### Nearby campgrounds:

Dutch Lake or Clearwater  
KOA

## Day 4: Clearwater to Revelstoke (275 km)

Depart Clearwater in the morning and travel southbound along the North Thompson River. Just south of Barrier, turn left onto the Agate Bay Road. This scenic road eventually turns into the Adams Forest Service Road. Stop at Adam's Lake for a scenic (lunch) stop. Further south Tsútswecw Provincial Park is another great place to visit. The park was established in 1977 to conserve and protect the spawning beds used by sockeye, chinook, coho and pink salmon. Depressions from kekulis (pit houses), artifacts and pictographs (rock paintings) are evidence that the Shuswap people have lived here for generations. After this merge onto Highway 1 (east) and continue to Revelstoke.

### Nearby campgrounds:

Lamplighter Campground or  
Snowforest Campground

## Day 5: Revelstoke to Lake Louise (250 km)

Continue east on Highway 1 and stop at the Rogers Pass Visitor Information Centre, where you can visit a great interpretive display of local wildlife or go for a short hike nearby. Keep an eye out for Bighorn sheep on the side of the highway after you depart Golden for Yoho National Park. Yoho National Parks is the smallest off the four National Parks in the Canadian Rockies, but it is spectacular nonetheless! In the park, you will visit Emerald Lake and Natural Bridge. Arrive at the Lake Louise village in the afternoon.

### Nearby campgrounds:

Lake Louise Campground or  
Caste Mountain Campground

## Day 6: Lake Louise to Banff (150 km)

Depart your campsite in the morning for the short drive to Lake Louise. After visiting Lake Louise continue to the nearby Moraine Lake (seasonal). In the afternoon you will visit Bow Falls at the base of Sulphur Mountain in Banff, followed by a visit to the Banff Gondola for a spectacular 360 degrees panorama of the surrounding mountains. End the day by driving the Minnewanka Lake loop to Two

### Nearby campgrounds:

Tunnel Mountain or Two Jack  
Campground



**Day 7: Banff to Icefields Parkway (325 km)**

Depart Banff in the morning via the Trans-Canada Highway (Highway 1) towards Lake Louise but leave the highway to merge onto the Bow Valley Parkway just west of Banff. The 48-km Bow Valley Parkway runs parallel to Highway 1 but provides visitors a more scenic and leisurely route between Banff and Lake Louise. Along the way, you can stop for a hike at the Johnston Canyon and take a photo at the Castle Mountain viewpoint. Continue northbound on the Icefields Parkway with stops at Bow Lake, Peyto Lake, the Big Bend and the Athabasca Glacier.

**Nearby campgrounds:**  
Columbia Icefield  
Campground or Wilcox Creek  
Campground

**Day 8: Icefields Parkway to Hinton (200 km)**

Travel further north on the Icefields Parkway, with countless scenic views along the way. Approximately 25 km further north you will find Athabasca Falls, which is one of Canada’s most powerful waterfalls, due to the sheer volume of water flowing into the gorge from the Athabasca River, fed by the massive Columbia Icefield. There are a number of platforms and walkways where you can safely view and photograph the falls. Near the northern end of the Icefields Parkway lies the Valley of the Five Lakes, with a 4.5 km hiking trail connecting the five lakes. Pass Jasper and continue towards the town of Hinton.

**Nearby campgrounds:**  
Gregg Lake Campground or  
Jarvis Lake Campground

**Day 9: Hinton to Leduc (350 km)**

Depart your campsite in the morning to return your RV to Fraserway RV in Leduc before 11:30 am.



**Useful websites:**

[www.bcparks.com](http://www.bcparks.com)  
[www.albertaparks.com](http://www.albertaparks.com)  
[www.parkscanada.com](http://www.parkscanada.com)

[www.hellobc.com](http://www.hellobc.com)  
[www.hopebc.ca](http://www.hopebc.ca)  
[www.tourismrevelstoke.com](http://www.tourismrevelstoke.com)

[www.banfflakelouise.com](http://www.banfflakelouise.com)  
[www.jasper.travel](http://www.jasper.travel)  
[www.wellsgray.ca](http://www.wellsgray.ca)

**Disclaimer:**

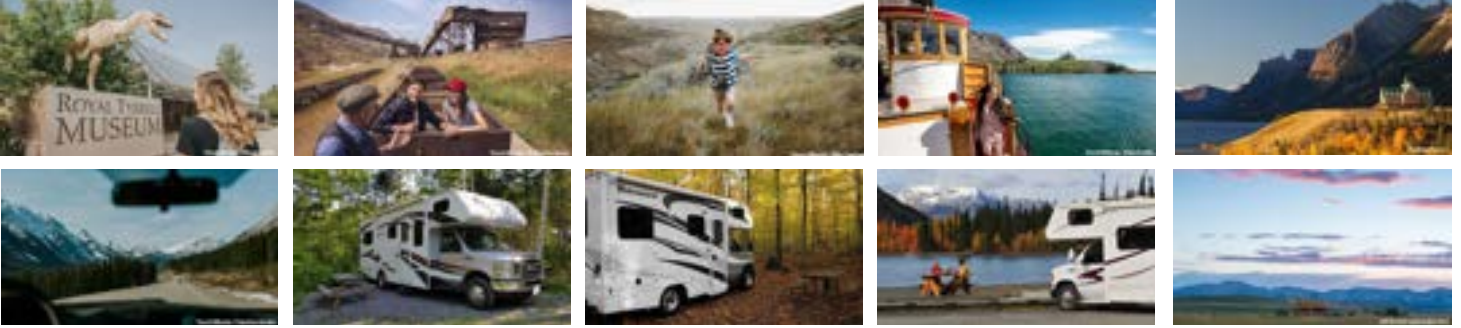
While we endeavour to keep the information up to date and correct, we make no representations or warranties of any kind, express or implied, about the completeness, accuracy, reliability, suitability, or availability. Any reliance you place on such information is therefore strictly at your own risk. Travellers are advised to confirm with each third party prior to arrival. The inclusion of any suggestions does not necessarily imply a recommendation or endorse the views expressed within them.





# DRUMHELLER, THE BADLANDS AND WATERTON

**Rental Location:** Edmonton **Duration:** 6 nights **Distance:** 1,650 km



## Day 1: Edmonton to Drumheller (280 km)

Pick up your RV in Leduc in the morning and head south on Highway 2, turning onto Highway 12 at Morningside towards Stettler. Arriving in Drumheller from the north you will get an amazing introduction to the scenic landscape as you enter Midland Provincial Park. Also visit the Royal Tyrrell Museum, where they have one of the largest selections of dinosaurs on display. To continue the scenic drive, visit Horsethief Canyon and later make sure to cross the river with the Bleriot Ferry. This five minute ferry ride is an experience in itself and the ferry has been in operation since 1913. Go past the Orkney Viewpoint and head towards the impressive Horseshoe Canyon for the night.

### Nearby campgrounds:

River Grove Campground or  
The Hoodoo RV Resort

## Day 2: Drumheller to Dinosaur Provincial Park (170 km)

Next to the many hiking areas, Drumheller also has fun activities to do with kids. Like the World's Largest Dinosaur or Cactus Coulee Fun Park. Be sure to explore the Hoodoos, oddly shaped rock formations carved out by erosion. A visit to Drumheller would not be complete without having crossed the 117-meter-long Star Mine Suspension Bridge. Head south on Highway 10, where just outside of town the Atlas Coal Mine National Historic Site is located. From there head west on Highway 570 and then south towards Dinosaur Provincial Park.

### Nearby campgrounds:

Dinosaur Campground

## Day 3: Dinosaur Provincial Park to Writing-On-Stone Provincial Park (250 km)

Dinosaur Provincial Park is known for being one of the richest dinosaur fossil areas in the world. Like Drumheller, it has the typical and spectacular out of this world badlands look. Its habitat consisting of an endangered riverine ecosystem makes it home for numerous rare animal and plant species, and its paleontological importance made it a UNESCO World Heritage Site in 1979. Spend the day hiking in the Dinosaur Park but leave enough time to reach the Writing-In-Stone Provincial Park by sunset.

### Nearby campgrounds:

Park Lake Campground or  
Writing-On-Stone Campground

## Day 4: Writing-On-Stone Provincial Park to Waterton National Park (210 km)

The Writing-on-Stone Provincial Park is another UNESCO World Heritage Site. The park contains an amazing concentration of rock art with over 50 petroglyph sites and thousands of works. After spending time marveling at the amazing landscape and rock art, head west on Highway 501 towards Waterton National Park. In Waterton Lakes National Park there is a multitude of sights to be seen and excursions to be done.

### Nearby campgrounds:

Belly River Campground or  
Townsite Campground

## Day 5: Waterton National Park

Clear lakes, thundering waterfalls, rainbow-coloured streams, colourful rocks and mountain vistas await hikers and sightseers. With an exceptional diversity of wildlife and wildflowers and a cozy little waterfront town to serve as a home base to explore the National Park today. Waterton Lakes National Park has 200 kilometres of hiking trails, ranging from easy strolls to strenuous wilderness hikes. The park is a particularly good place to enjoy a variety of shorter trails which can be easily completed in a few hours. Step aboard the historic M.V. International, the oldest passenger ship still operating in Canada, and take in breathtaking scenery on a 2-hour scenic cruise. View majestic towering cliffs and beautiful waterfalls while learning more about the Park and the interconnected ecosystems.

### Nearby campgrounds:

Interlakes Campground or  
Lower Lake Campground



**Day 6: Waterton Lakes National Park to Kananaskis Country (330 km)**

Use the morning to continue exploring Waterton Lakes National Park. Once you are ready to leave the park head north on Highway 6 and continue towards Lundbreck Falls. From here continue to Bar U Ranch National Historic Site to discover the life of a ranching cowboy from the late 1800s. Please be aware of the seasonal closure of Highway 40 between December and June. Kananaskis Country has multiple provincial parks: Bow Valley, Peter Lougheed, Spray Valley. All have great hiking trails and beautiful views. If you don't feel like walking, try a guided horseback riding tour at Boundary Ranch.

**Nearby campgrounds:**  
Interlakes Campground or Lower Lake Campground

**Day 7: Kananaskis to Rocky Mountain House (210 km)**

After finishing exploring the gorgeous Kananaskis Country continue north on Highway 40, heading towards the town of Kananaskis. Make sure you stop at the scenic Barrier Lake, the impressive looking Widowmaker next to it and Canoe Meadows just up the road. In Kananaskis turn left to cross the river and head east on the Bow Valley Trail, also called Highway 1A. This road runs parallel to Highway 1, but it is a more relaxing and scenic option. In Cochrane turn north onto Highway 22, this highway is part of the famous Cowboy Trail. Cowboy Trail has many historic sites and its beautiful rolling foothills make the drive up to Rocky Mountain House an absolute pleasure.

**Nearby Campgrounds:**  
Rocky Mountain House National Historic Site or Riverview Campground

**Day 8: Rocky Mountain House to Edmonton (200 km)**

Continue north on the Cowboy Trail towards Drayton Valley. Return your RV to Fraserway RV in Leduc before 11:30 am.



**Useful websites:**  
[www.parksCanada.com](http://www.parksCanada.com)  
[www.albertaparks.ca](http://www.albertaparks.ca)

[www.traveldrumheller.com](http://www.traveldrumheller.com)  
[www.tourismmedicinehat.com](http://www.tourismmedicinehat.com)

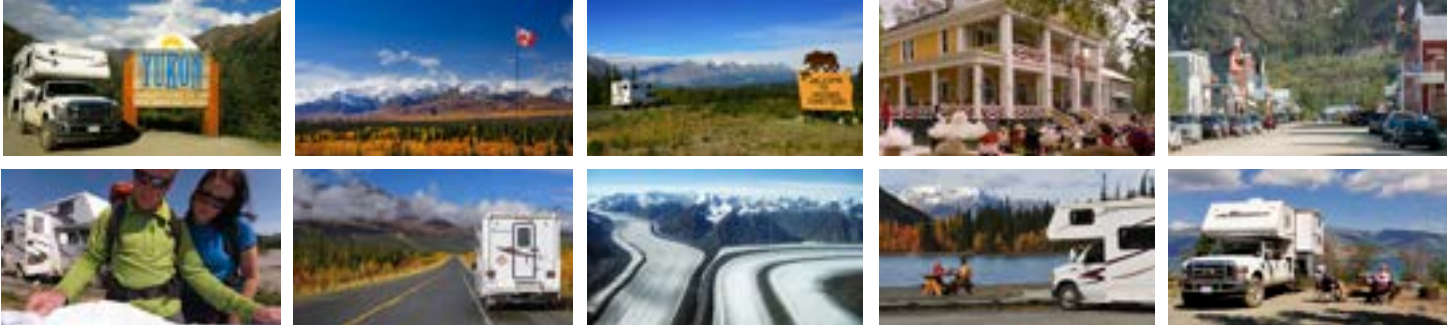
[www.tourismlethbridge.com](http://www.tourismlethbridge.com)  
[www.mywaterton.ca](http://www.mywaterton.ca)

**Disclaimer:**  
While we endeavour to keep the information up to date and correct, we make no representations or warranties of any kind, express or implied, about the completeness, accuracy, reliability, suitability, or availability. Any reliance you place on such information is therefore strictly at your own risk. Travellers are advised to confirm with each third party prior to arrival. The inclusion of any suggestions does not necessarily imply a recommendation or endorse the views expressed within them.



# HIGHLIGHTS OF THE YUKON (INCL. ALASKA)

**Rental Location:** Whitehorse **Duration:** 10 nights **Distance:** 1,600 km



## Day 1: Whitehorse to Keno City (475 km)

Pick up your RV at Fraserway RV in Whitehorse and head north on the Klondike Highway. Be sure to stop at the Braeburn Lodge for their incredible cinnamon buns! In Carmacks stop at the Tagé Cho Hudän Interpretive Centre to learn about the Northern Tutchone culture. After this, you can stop at the Five Finger Rapids for a short hike down to the rapids. In Stewart Crossing turn right to the Silver Trail to make your way towards Mayo. Here you can opt to visit the local museum or go for a swim at Mayo's heated outdoor pool. Arrive in Keno City at the end of the Silver Trail in the late afternoon.

### Nearby campgrounds:

Keno City Campground

## Day 2: Keno City (25 km)

Spend the day exploring the town of Keno and its direct surroundings. Visit the Keno City Mining Museum & Alpine Interpretive Centre and take a stroll around town to see the historic buildings. In the afternoon drive up Signpost Road to Keno Hill to see old mining structures along the way and an amazing viewpoint. It is recommended to check current road conditions at the museum before your departure.

### Nearby campgrounds:

Keno City Campground

## Day 3: Keno City to Dawson City (300 km)

Depart Keno City in the morning and drive back to Stewart Crossing. From here continue on the Klondike Highway towards Dawson City. Stop at the Moose Creek Lodge, Gravel Lake, Tintina Trench, and Klondike River along the way. Upon arrival in Dawson City follow the trail from the end of the Yukon River Campground along the river and walk approximately 200 meters to the Paddlewheel Graveyard.

### Nearby campgrounds:

Yukon River Campground or  
Bonanza Gold Campground

## Day 4: Dawson City (25 km)

The SS Keno is a preserved historic sternwheel paddle steamer located on the waterfront in downtown Dawson City. You can visit this National Historic Site on a guided tour. Another popular sight is the Robert Service Cabin, where you can listen to poetry readings or enjoy a guided tour. Drive to the top of the Dome in the evening for a spectacular sunset and a stunning 360 degrees view over Dawson City, and the Klondike and Yukon Rivers.

### Nearby campgrounds:

Yukon River Campground or  
Bonanza Gold Campground

## Day 5: Dawson City to Chicken (175 km)

Leave Dawson City via the Top of the World Highway. This largely unpaved road runs on top of the mountain range and provides breathtaking views of the surrounding area. Be sure to have your passport ready for the border crossing into Alaska! Once you cross the border the Taylor Highway is quite the bumpy, winding mountain road.

### Nearby campgrounds:

Chicken Gold Camp and  
Outpost

## Day 6: Chicken to Kluane National Park (350 km)

Depart on the Taylor Highway in a southbound direction to reach Tetlin Junction. From here the Alaska Highway will take you to Beaver Creek on the Canadian side of the border. This is Canada's westernmost community. After leaving Beaver Creek you will cross the White River and enter Kluane County, with spectacular views of Kluane National Park on your right. Spend the night on the shore of the White River at the Lake Creek Campground.

### Nearby campgrounds:

Lake Creek Campground



**Day 7: Kluane National Park to Haines Junction (225 km)**

Depart your campsite in the morning and visit the world's largest gold pan in Burwash Landing on your way south. From here on, the highway follows the western shoreline of Kluane Lake with spectacular views and photo opportunities along the way. The Tachäl Dhäl Interpretive Centre is a great place to get information for local hikes. Keep an eye out for Dall Sheep on the nearby hills. Just a little further south you will find the ruins of Silver City, with a former trading post, roadhouse and Northwest Mounted Police barracks.

**Nearby campgrounds:**  
Kluane Park Inn & RV

**Day 8: Haines Junction to Kathleen Lake (25 km)**

Today will be a leisure day to go fishing, hiking or rafting. Visit the Haines Junction information center for more local information or to book your excursion. Kathleen Lake is the only lake in the Yukon with landlocked Sockeye Salmon (Kokanee), and a great place to spend the night.

**Nearby campgrounds:**  
Kathleen Lake Campground

**Day 9: Kluane National Park to Kusawa (150 km)**

Enjoy a leisurely walk on the Kokanee trail at the lake's day-use area in the morning. In the afternoon you have the option to embark on a breathtaking glacier flight in Haines Junction to see Canada's highest mountain Mount Logan and the world's largest non-polar ice fields from above. After a stop to learn about the short-lived Kluane Gold Rush in Canyon City you will arrive at your campsite.

**Nearby campgrounds:**  
Kusawa Lake Campground

**Day 10: Kusawa Lake to Whitehorse (100 km)**

Begin your stay in Whitehorse by visiting the Kwanlin Dün Cultural Centre. This award-winning building celebrates the heritage, culture and contemporary way of life of our Kwanlin Dün citizens. Then wander along the riverside trail to the MacBride Museum before walking over to the S.S. Klondik.

**Nearby campgrounds:**  
Caribou RV Park or Wolf Creek Campground

**Day 11: Whitehorse (5 km)**

Return your RV to Fraserway RV in Whitehorse by 11:30 am.



**Useful websites:**

[www.travelyukon.com](http://www.travelyukon.com)  
[www.kluaneglacierairtours.com](http://www.kluaneglacierairtours.com)

[www.dawsoncity.com](http://www.dawsoncity.com)  
[www.bellalaska.com](http://www.bellalaska.com)

[www.parkscanada.com](http://www.parkscanada.com)

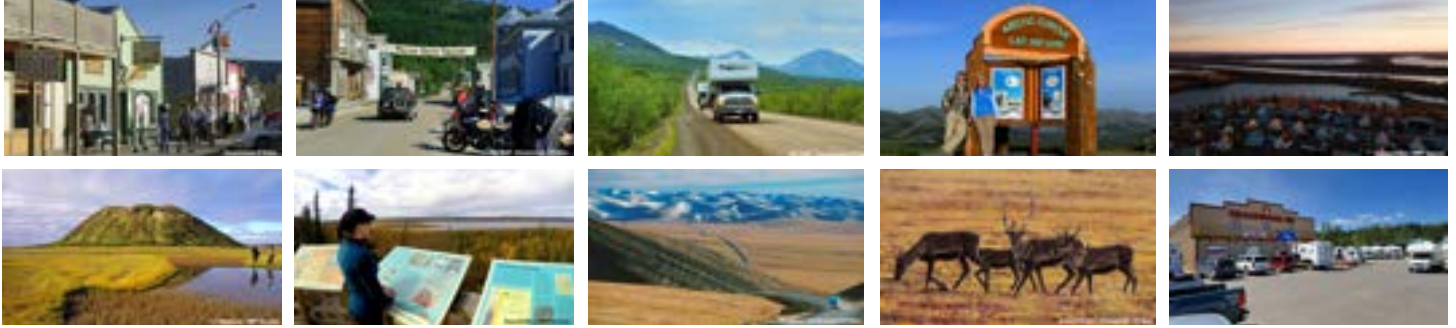
**Disclaimer:**

While we endeavour to keep the information up to date and correct, we make no representations or warranties of any kind, express or implied, about the completeness, accuracy, reliability, suitability, or availability. Any reliance you place on such information is therefore strictly at your own risk. Travellers are advised to confirm with each third party prior to arrival. The inclusion of any suggestions does not necessarily imply a recommendation or endorse the views expressed within them.



# DAWSON CITY AND THE DEMPSTER HIGHWAY

**Rental Location:** Whitehorse **Duration:** 9 nights **Distance:** 3,000 km



## Day 1: Whitehorse to Dawson City (525 km)

Pick up your RV at Fraserway RV in Whitehorse and head north on the Klondike Highway. Be sure to stop at the Braeburn Lodge for their incredible cinnamon buns! In Carmacks stop at the Tagé Cho Hudän Interpretive Centre to learn about the Northern Tutchone culture. After this, you can stop at the Five Finger Rapids for a short hike down to the rapids. Upon arrival in Dawson City follow the trail from the end of the Yukon River Campground for a short walk to the Paddlewheel Graveyard.

### Nearby campgrounds:

Yukon River Campground or Bonanza Gold Campground

## Day 2: Dawson City (50 km)

Spend a full day in Dawson City to enjoy the large variety of activities and places to see. The SS Keno is a preserved historic sternwheel paddle steamer located on the waterfront in downtown Dawson City. You can visit this National Historic Site on a guided tour. Another popular sight is the Robert Service Cabin, where you can listen to poetry readings or enjoy a guided tour. Try your luck searching for gold at the Discovery Claim National Historic Site in the afternoon, followed by a drive to the top of the Dome for a spectacular sunset and view over Dawson City, and the Klondike and Yukon Rivers.

### Nearby campgrounds:

Yukon River Campground or Bonanza Gold Campground

## Day 3: Dawson City to Tombstone Territorial Park (125 km)

Drive 40 km south on the Klondike Highway to reach Mile 0 of the Dempster Highway. Top up your fuel here, as the next gas station is nearly 400 km away! The rough, unpaved Dempster Highway is the only road that provides access to Tombstone Territorial Park. Often called Canada's Patagonia, the mountains in Tombstone Territorial Park are an amazing sight to see. Stop at the Visitor Information just south of the park's only campsite to learn more about the park. The centre hosts evening programs and special events throughout the summer.

### Nearby campgrounds:

Tombstone Mountain Campground

## Day 4: Tombstone Territorial Park to Rock River (375 km)

At km 405 of the Dempster Highway, it is time to break out the champagne and pose for a photo at the Article Circle sign as proof of your achievement. The Rock River campground is nestled in one of the few boreal forest stands in the region. The campground is named after the river, whose Gwich'in name, Chii Deetak, means "river flowing between the rocky hills." The open tundra begins just north of the campsite and stretches from here to the Beaufort Sea.

### Nearby campgrounds:

Rock River Government Campground

## Day 5: Rock River to Inuvik (300 km)

Travel through the Richardson Mountains and across the tundra to reach Inuvik. Upon arrival, a stop at the Visitor Centre will provide you with all the information you need. The Visitor Centre contains many interesting exhibits on art, flora and fauna, neighbouring communities and wildlife. Nearby, you also find the Aurora research centre and an igloo church.

### Nearby campgrounds:

Happy Valley or Jak Park Campground

## Day 6: Inuvik to Tuktoyaktuk (150 km)

The Inuvik-Tuktoyaktuk Highway opened in 2017 and is Canada's first public highway to lead directly to the Arctic Ocean. Upon arrival in 'Tuk' take a dip in the Arctic Ocean and the Tuktoyaktuk Ice House. Various local tour operators offer excursions to the Pingo National Landmark.

### Nearby campgrounds:

The Point Area



**Day 7: Tuktoyaktuk to Nitainlaih Territorial Park (350 km)**

Depart Tuktoyaktuk in the morning for the trip back south. Just south of Inuvik the Tithegeh Chii Vitaii Lookout provides a spectacular view over Campbell Lake in Gwich'in Territorial Park. The park is home to several natural wonders of the Mackenzie Delta region: limestone cliffs, rare Arctic plant communities and migratory bird staging areas. From here continue southbound to Nitainlaih Territorial Park, perched on a cliff overlooking the Peel River and surrounded by stands of white birch and white spruce trees. The visitor centre offers a fascinating glimpse of the life of the Gwich'in Dene people, past and present.

**Nearby campgrounds:**  
Nitainlaih Territorial Park  
Campground

**Day 8: Nitainlaih Territorial Park to Engineer Creek (350 km)**

Just south of your campsite you will make your way back into the Yukon. The interpretive displays at the Yukon/NWT border describe the local wildlife and landscape and are worth stopping for. Remember to set your clocks one hour back here. Further south the Ogilvie-Peel viewpoint provides expansive views of both rivers. Keep an eye out for Caribou from September through May in the afternoon.

**Nearby campgrounds:**  
Engineer Creek Government  
Campground

**Day 9: Engineer Creek to Stewart Crossing (485 km)**

The final stretch of the Dempster Highway will take you back to the Klondike Highway. The North Fork Pass, at an elevation of 1,289 meters, is the highest point of the Dempster Highway. During the month of October, various herds of Caribou can sometimes be seen crossing the highway in this area. A roadside pullout approximately 7 km further south offers a spectacular view of Tombstone Mountain.

**Nearby campgrounds:**  
Tatchun Creek Campground

**Day 10: Stewart Crossing to Whitehorse (200 km)**

Depart your campsite in the morning and return your RV to Fraserway RV in Whitehorse by 11:30 am.



**Useful websites:**

[www.travelyukon.com](http://www.travelyukon.com)  
[www.parkscanada.ca](http://www.parkscanada.ca)

[www.dawsoncity.com](http://www.dawsoncity.com)  
[www.dempsterhighway.com](http://www.dempsterhighway.com)

[www.nwtparks.ca](http://www.nwtparks.ca)  
[www.spectacularnwt.com](http://www.spectacularnwt.com)

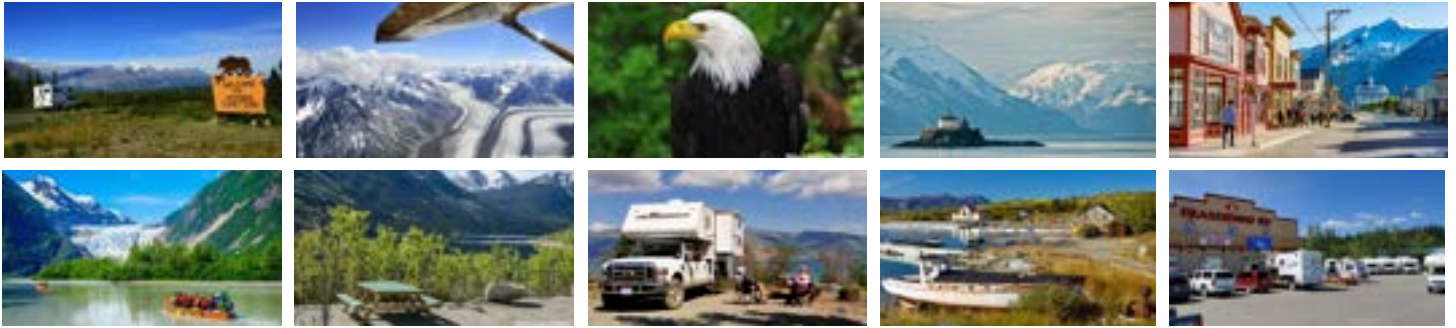
**Disclaimer:**

While we endeavour to keep the information up to date and correct, we make no representations or warranties of any kind, express or implied, about the completeness, accuracy, reliability, suitability, or availability. Any reliance you place on such information is therefore strictly at your own risk. Travellers are advised to confirm with each third party prior to arrival. The inclusion of any suggestions does not necessarily imply a recommendation or endorse the views expressed within them.



# GOLDEN CIRCLE ROUTE AND ATLIN

**Rental Location:** Whitehorse **Duration:** 9 nights **Distance:** 1,000 km



## Day 1: Whitehorse to Haines Junction (155 km)

Pick up your RV in Whitehorse in the morning and stock up on groceries and supplies before leaving town. Travel westbound on the historic Alaska Highway towards Haines Junction. Haines Junction is the gateway to Kluane National Park and Reserve, a park roughly half the size of Switzerland. The park features twelve of Canada's highest mountains including Mount Logan, the country's highest peak.

### Nearby campgrounds:

Kathleen Lake Campground

## Day 2: Haines Junction (25 km)

Spend a full day in Haines Junction to enjoy everything the area has to offer. Choose from one of the area's many hikes, go rafting on the Tatshenshini River, or visit the Da Kų Cultural Centre to learn more about the history and lifestyle of the Champagne and Aishihik First Nations. Embark on a glacier sightseeing flight for a truly unique view of this spectacular part of the world!

### Nearby campgrounds:

Kathleen Lake Campground

## Day 3: Haines Junction to Haines (250 km)

Depart Haines Junction in the morning. The Haines Highway is one of the most spectacular drives in the North and was designated a Scenic Byway in 2009. Along the way, an extensive boardwalk leads to a lookout where you can watch the 60 meter high Million Dollar Falls on the Takhanne River. Each July the falls are the endpoint for the Chinook's upstream salmon spawning run. Be sure to have your passports ready for the border crossing into Alaska. After crossing the border, the 40-mile stretch of highway takes you through the Bald Eagle Preserve.

### Nearby campgrounds:

Haines Hitch-Up RV Park or  
Chilkoot Lake Recreation Site

## Day 4: Haines (10 km)

Haines is situated on the Alaska Panhandle and is known as Alaska's adventure capital. It serves as a popular destination for tourists visiting Glacier Bay National Park. Enjoy this leisure day to visit one or more of the city's museums, enjoy a local hike, and visit the local brewery and distillery.

### Nearby campgrounds:

Haines Hitch-Up RV Park or  
Chilkoot Lake Recreation Site

## Day 5: Haines to Skagway (35 km)

Leave your campsite in the morning for the ferry ride to Skagway. The car deck fills up quickly, so it is recommended to make a reservation at least one week in advance. Watch for whales, eagles and maybe even grizzly bears fishing for salmon on this scenic 45-minute ferry ride. Skagway is nestled at the northernmost reaches of the Inside Passage. The streets are lined with wooden boardwalks and restored buildings, looking much as they did over 100 years ago. Attend "The Days of '98" show in the evening to relive an incredible story of the 1898 Klondike Gold Rush through music, laughter, and of course, the legendary Can-Can!

### Nearby campgrounds:

Pullen Creek RV Park or Dyea  
Flats Campground

## Day 6: Skagway (10 km)

Skagway has a lot of wonderful hiking trails around town. Train enthusiasts can take a full day ride on the historic White Pass & Yukon Route railway. The track climbs 3000 ft in just 12.5 km, through tunnels and across trestle bridges. Another option is to book a day trip with a fast ferry to Juneau, where you can find restaurants, souvenir shops, great hiking trails and tours to the Mendenhall Glacier. The ferry ride offers great chances of seeing whales, seals and grizzly bears!

### Nearby campgrounds:

Pullen Creek RV Park or Dyea  
Flats Campground



**Day 7: Skagway to Contad Lake (100 km)**

Travel on the Klondike Highway, with stops at the Captain William Moore Bridge, and the Summit Lake pullout, about 6 km before the border. Before crossing the border back into Canada, you can stop for a quick photo of the 'Welcome to Alaska' sign on the left side of the highway. After returning to Canada and adjusting your watch back to Mountain Standard Time, the Yukon Suspension Bridge offers impressive views over the white-water rapids of the Tutshi River. Your campsite is located at the Conrad Historic Townsite, a former mining town dating back to the start of the 20th century.

**Nearby campgrounds:**  
Conrad Campground

**Day 8: Conrad Lake to Snafu Lake (100 km)**

Continue northbound on the Klondike Highway to the beautiful Bove Island Viewpoint. Approximately ten kilometers further north lies Carcross, a historic village that sits on the shores of Bennett Lake. The Visitor Information Centre offers a handout for a self-guided walking tour of the 'Carcross Commons' and the rest of town. Visit the Parks Canada exhibit on the Chilkoot Trail at the Visitor Centre. The Carcross Desert just north of town is often considered the smallest desert in the world. From here continue north to the Emerald Lake viewpoint. After this backtrack to Carcross where you will turn East onto Tagish Road, then South at the junction to Atlin until Snafu Lake.

**Nearby campgrounds:**  
Snafu Lake Campground

**Day 9: Snafu Lake to Atlin (70 km)**

Follow Atlin Road (Highway 7) southbound and enter the province of British Columbia. This road follows the eastern shore of Atlin Lake to the village of Atlin. In Atlin, you can visit the former transportation vessel MV Tarahne, the Atlin Museum and Visitor Information Centre, and the Atlin Pioneer Cemetery where many of the town's early residents are buried. There is also an opportunity to rent a canoe or kayak and explore the shoreline and islands

**Nearby campgrounds:**  
Pine Creek Campground  
or Grotto Recreation Site

**Day 10: Atlin to Whitehorse (175 km)**

Return your RV to Fraserway RV in Whitehorse by 11:30 am.



**Useful websites:**

[www.traveleyukon.com](http://www.traveleyukon.com)  
[www.kluaneglacierairtours.com](http://www.kluaneglacierairtours.com)

[www.hainesjunctionyukon.com](http://www.hainesjunctionyukon.com)  
[www.visithaines.com](http://www.visithaines.com)

[www.skagway.com](http://www.skagway.com)  
[www.parksCanada.ca](http://www.parksCanada.ca)

**Disclaimer:**

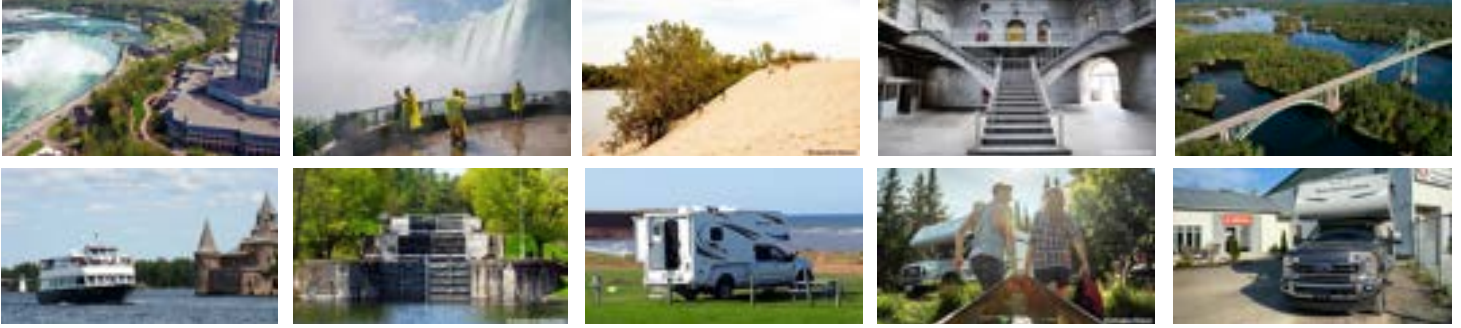
While we endeavour to keep the information up to date and correct, we make no representations or warranties of any kind, express or implied, about the completeness, accuracy, reliability, suitability, or availability. Any reliance you place on such information is therefore strictly at your own risk. Travellers are advised to confirm with each third party prior to arrival. The inclusion of any suggestions does not necessarily imply a recommendation or endorse the views expressed within them.





# 1000 ISLANDS AND ALGONQUIN PROVINCIAL PARK

**Rental Location:** Toronto **Duration:** 8 nights **Distance:** 1,500 km



## Day 1: Toronto to Niagara Falls (200 km)

Pick up your RV in Cookstown in the morning and depart southbound to Niagara Falls. The Queen Elizabeth Highway follows Lake Ontario's shoreline from Toronto to the Niagara Peninsula. Upon arrival at Niagara Falls park your RV and explore the waterfront on foot. Option to enjoy one or more of the activities near the Falls or visit the scenic community of Niagara on the Lake at the northern end of the Niagara Parkway in the afternoon.

### Nearby campgrounds:

Niagara Falls KOA Holiday or Campark Resort

## Day 2: Niagara Falls to Prince Edward County (350 km)

Depart Niagara Falls in the morning. Traffic can be heavy throughout the day, especially on Highway 401 around Toronto, so allow time to reach your destination today. Exit the freeway at the Port Hope exit and continue on the scenic Highway 2 to explore historic Prince Edward County wine country and Lake Ontario beaches at Sandbanks Provincial Park.

### Nearby campgrounds:

Outler River Campgrounds or West Lake Campground

## Day 3: Prince Edward to Gananoque (150 km)

Depart your campsite in the morning for the short drive to Bloomfield where you may revel in the TerraCello Winery or Huff Estates Winery. From here, the Loyalist Parkway passes through four municipalities along its route, each with its own unique charm and character. After a visit to the town of Picton, you will embark on a scenic 15-minute free ride on the Glenora Ferry. The Loyalist Parkway is a memorial to the settlers who remained loyal to the British Crown and fled extreme persecution during the American War of Independence. In Kingston, near the eastern end of the parkway, you can go behind the walls of Canada's oldest and most infamous maximum security prison at Kingston Penitentiary National Historic Site offering daily, seasonal tours. From Kingston continue on the King's Highway (Highway 2) to Gananoque.

### Nearby campgrounds:

1000 Islands Camping Resort or Ivy Lea KOA Campground

## Day 4: Gananoque (25 km)

Gananoque, in the heart of the 1000 Islands region, is recognized as one of Eastern Ontario's most stunning waterfront communities. The best way to experience the magnificence of the 1000 Islands is by boat tour on the Saint Lawrence River past fairytale castles, historic lighthouses and stately mansions that take you back to the area's heyday as a playground for the rich and famous. Spend the rest of the day exploring the local trails on foot or by bicycle and experiencing Gananoque's artisan shops and galleries.

### Nearby campgrounds:

1000 Islands Camping Resort or Ivy Lea KOA Campground

## Day 5: Gananoque to Merrickville (100 km)

Depart Gananoque in the morning towards Delta. The Rideau Canal connects the city of Ottawa with Lake Ontario and the Saint Lawrence River in Kingston. The Jones Falls Locks are in one of the most picturesque locations along the Rideau Canal and home to the Great Stone Arch Dam. When completed in 1831, this was the highest dam in North America. A short drive from here the 3.9 km summit loop at Rock Dunder offers the most spectacular views of the 202 km long waterway. In Delta, a visit to the Old Stone Mill National Historic Site of Canada is highly recommended. Arrive in Merrickville, named the Jewel of the Rideau, in the late afternoon.

### Nearby campgrounds:

Merrickville Lions Club Campground



**Day 6: Merrickville Algonquin Provincial Park (250 km)**

Depart Merrickville in the morning for the drive towards the Frank McDougall Parkway (Highway 60). Originally completed in 1937, this road is a great way to see one of Canada's beautiful parks and is famous for colourful foliage in the fall months. Visit the Visitor Centre at the East Gate to Algonquin Provincial Park to obtain a park pass and for assistance planning your leisure day tomorrow. The Algonquin Logging Museum is located near the East Gate and celebrates the colourful and fascinating history of logging in Algonquin Park. Spend the following two nights at one of the many campgrounds in the park.

**Nearby campgrounds:**  
Lake of Two Rivers or Pog Lake Campground

**Day 7: Algonquin Provincial Park (25 km)**

Free day to enjoy all the natural recreation the park has to offer with canoeing, kayaking, fishing, biking, swimming, photography, bird and wildlife watching, or hiking one or more of the many trails in the park. The park's many trails include the Whiskey Rapids Trail, along the Oxtongue River, and the Barron Canyon Trail, with views from the north rim.

**Nearby campgrounds:**  
Lake of Two Rivers or Pog Lake Campground

**Day 8: Algonquin Provincial Park to Parry Sound (125 km)**

Depart Algonquin Provincial Park via the West Gate. Consider stopping at the Hardwood Lookout Trail near the West Gate on your way out of the park. From here, continue onward to Parry Sound. This town hugs the shores of the world's largest freshwater archipelago, known as the 30,000 Islands. The area boasts several provincial parks, many beautiful beaches and countless hiking trails.

**Nearby campgrounds:**  
Parry Sound KOA or Trailside RV Resort

**Day 9: Parry Sound to Toronto (160 km)**

Depart Parry Sound in the morning and return your RV to Fraserway RV in Cookstown before 11:30



Toronto

**Useful websites:**

[www.southeasternontario.ca](http://www.southeasternontario.ca)  
[www.ontarioparks.com](http://www.ontarioparks.com)  
[www.niagarafallstourism.com](http://www.niagarafallstourism.com)

[www.loyalistparkway.org](http://www.loyalistparkway.org)  
[www.1000islandstourism.com](http://www.1000islandstourism.com)  
[www.merrickville-wolford.ca](http://www.merrickville-wolford.ca)

[www.algonquinpark.on.ca](http://www.algonquinpark.on.ca)  
[www.parrysoundtourism.com](http://www.parrysoundtourism.com)

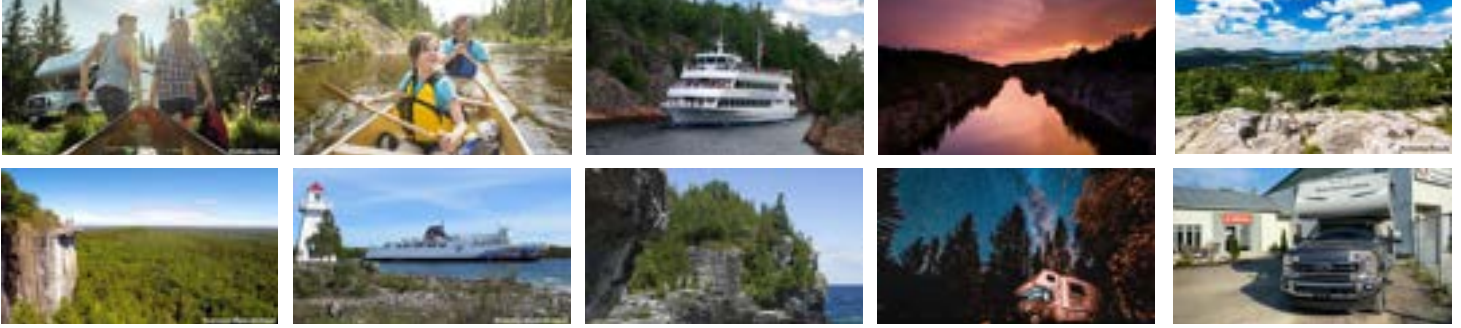
**Disclaimer:**

While we endeavour to keep the information up to date and correct, we make no representations or warranties of any kind, express or implied, about the completeness, accuracy, reliability, suitability, or availability. Any reliance you place on such information is therefore strictly at your own risk. Travellers are advised to confirm with each third party prior to arrival. The inclusion of any suggestions does not necessarily imply a recommendation or endorse the views expressed within them.



# ALGONQUIN PROVINCIAL PARK AND GEORGIAN BAY

**Rental Location:** Toronto **Duration:** 8 nights **Distance:** 1,250 km



## Day 1: Toronto to Algonquin Provincial Park (200 km)

Pick up your RV in Cookstown in the morning and travel north to the city of Barrie. At the heart of the city, Barrie's waterfront is a major attraction for residents and tourists. Spanning more than 5 km, the waterfront is yours to experience! After departing Barrie, continue on Highway 11 to Gravenhurst. Gravenhurst is known as the Gateway to the Muskoka region. With sparkling lakes, clear rivers and more than 4,000 square kilometres of pine trees, the Muskoka region offers a beautiful landscape. Further north on Highway 11 you will enter the Frank McDougall Parkway (Highway 60). Visit the Visitor Centre at the park's West Gate for assistance planning your leisure day tomorrow. Spend the following two nights at Algonquin Park.

### Nearby campgrounds:

Lake of Two Rivers or Pog Lake Campground

## Day 2: Algonquin Provincial Park (50 km)

Free day to enjoy the park. Option to go on a guided canoe tour, or to hike the Track & Tower trail or one of the other many hiking trails in the park. The park's many trails include the Whiskey Rapids Trail, along the Oxtongue River, and the Barron Canyon Trail, with views from the north rim.

### Nearby campgrounds:

Lake of Two Rivers or Pog Lake Campground

## Day 3: Algonquin Provincial Park to Parry Sound (150 km)

Depart Algonquin Provincial Park via the West gate. Consider stopping at the Hardwood Lookout trail near the West Gate on your way out of the park. Continue further west to Parry Sound. This town hugs the shores of the world's largest freshwater archipelago, known as the 30,000 Islands. The area boasts several Provincial Parks, many beautiful beaches and countless hiking trails.

### Nearby campgrounds:

Parry Sound KOA or Trailside RV Resort

## Day 4: Parry Sound to French River (100 km)

Travel north on Highway 69 to make your way from Parry Sound to the French River. The French River flows for 105 km from Lake Nipissing to Georgian Bay, offering breathtaking scenery. The French River Visitor Centre tells the stories of this historic waterway in the "Voices of the River" exhibit hall. Various interpretive panels, displays and interactive exhibits take the visitor along the length of the river and through time. Themes include the First Peoples, the Explorers, French Fur Traders and Missionaries, the Canadian Fur Trade, and the French River Today. From the Visitor Centre, you can opt to hike the Recollet Falls trail. This trail begins at the Visitor Centre and follows the edge of the French River Gorge, and ends at the historic Recollet Falls. The short portage around the falls has been walked by generations of First Nations, famous explorers, hardy Voyageurs, fur traders and missionaries.

### Nearby campgrounds:

Schell's Camp & Park or Loon's Landing

## Day 5: French River to Killarney (100 km)

This iconic 645 square kilometres wilderness landscape showcases the wild Georgian Bay Coast of pink granite; the La Cloche Mountains' white quartzite ridges and over 50 exceptionally clear, sapphire lakes set among Jack Pine hills. Explore the historic Village of Killarney, founded in 1820 as a fur trading post on Georgian Bay, and home of the famous Herbert Fisheries fish and chips.

### Nearby campgrounds:

George Lake or Rocher Rouge Campground



**Day 6: Killarney to Manitoulin Island (275 km)**

Depart Killarney in the morning and travel to Manitoulin Island via the Trans-Canada Highway and Highway 6. Manitoulin Island is the heart and spirit of the Canadian Great Lakes and the largest freshwater island in the world! The 'Little Current Swing Bridge' on Highway 6 forms the only land access to the island. Approximately 18 km west of Little Current at the junction of Hwy. 540 and Bidwell Rd. is the famous Cup and Saucer Trail. This is one of the most popular trails in Ontario and a great way to spend the afternoon!

**Nearby campgrounds:**  
Mindemoya Court or Batman's Campground

**Day 7: Manitoulin Island (275 km)**

Today the entire day will be spent exploring Manitoulin Island. Visit the Mississagi Lighthouse and the surrounding trails in Meldrum Bay offer beautiful views of the rockfaces and Lake Huron. It is recommended to spend the night at one of the campsites close to the ferry terminal.

**Nearby campgrounds:**  
Breakwater Park Campground or Southbay Resort and Campground

**Day 8: Manitoulin Island to the Bruce Peninsula (125 km)**

In the morning travel by ferry from South Baymouth to Tobermory. Relax in a comfy Muskoka chai while enjoying the best views to be found anywhere on Georgian Bay. A ferry reservation is required for this route, book in advance! Near the town of Tobermory dramatic cliffs rise from the turquoise waters of Georgian Bay. Another nearby destination is the Grotto, a scenic cave containing a pool of blue water. Parking at the Grotto is limited but can be booked in advance on the Parks Canada website. Spend the rest of the day enjoying the many points of interest on the Bruce Peninsula.

**Nearby campgrounds:**  
Lion's Head Beach Park or Red Bay

**Day 9: Bruce Peninsula to Toronto (125 km)**

Depart your campsite in the morning and return your RV to Fraserway RV in Cookstown by 11:30 am.



Toronto

**Useful websites:**

[www.southeasternontario.ca](http://www.southeasternontario.ca)  
[www.ontarioparks.com](http://www.ontarioparks.com)

[www.algonquinpark.on.ca](http://www.algonquinpark.on.ca)  
[www.parrysoundtourism.com](http://www.parrysoundtourism.com)

[www.destinationmanitoulinisland.com](http://www.destinationmanitoulinisland.com)  
[www.thebrucepeninsula.com](http://www.thebrucepeninsula.com)

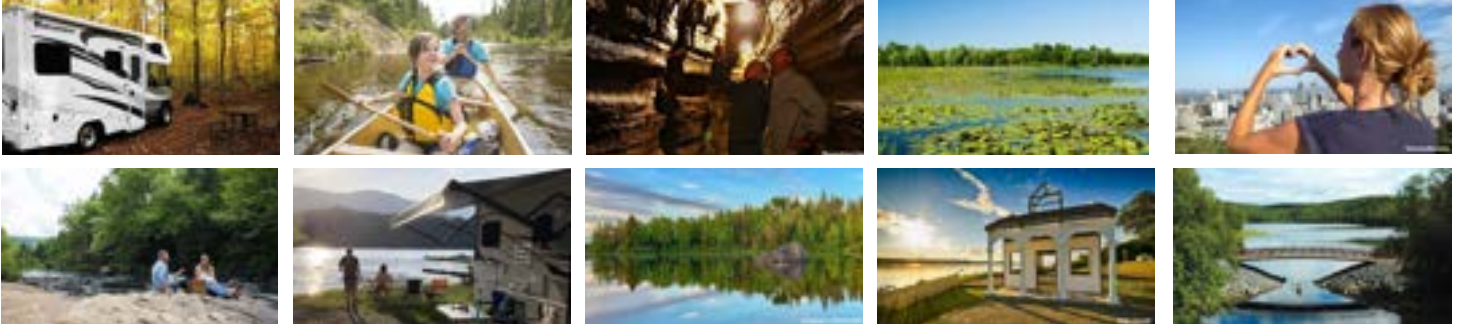
**Disclaimer:**

While we endeavour to keep the information up to date and correct, we make no representations or warranties of any kind, express or implied, about the completeness, accuracy, reliability, suitability, or availability. Any reliance you place on such information is therefore strictly at your own risk. Travellers are advised to confirm with each third party prior to arrival. The inclusion of any suggestions does not necessarily imply a recommendation or endorse the views expressed within them.



# OTTAWA, MONTREAL AND SOUTHERN QUEBEC

**Rental Location:** Toronto **Duration:** 10 nights **Distance:** 2,000 km



## Day 1: Toronto to Algonquin Provincial Park (200 km)

Pick up your RV in Cookstown in the morning and travel north to the city of Barrie. At the heart of the city, Barrie's waterfront is a major attraction for residents and tourists. Spanning more than 5 km, the waterfront is yours to experience! After departing Barrie, continue on Highway 11 to Gravenhurst. Gravenhurst is known as the Gateway to the Muskoka region. With sparkling lakes, clear rivers and more than 4,000 square kilometres of pine trees, the Muskoka region offers a beautiful landscape. Further north on Highway 11 you will enter the Frank McDougall Parkway (Highway 60).

### Nearby campgrounds:

Lake of Two Rivers or Pog Lake Campground

## Day 2: Algonquin Provincial Park (50 km)

Free day to enjoy the park. Option to go on a guided canoe tour, or to hike the Track & Tower trail or one of the other many hiking trails in the park. The park's many trails include the Whiskey Rapids Trail, along the Oxtongue River, and the Barron Canyon Trail, with views from the north rim.

### Nearby campgrounds:

Lake of Two Rivers or Pog Lake Campground

## Day 3: Algonquin Provincial Park to Ottawa (300 km)

Depart your campsite in the morning and travel eastbound on Highway 60. Stop for a guided tour in the spectacular underground cave system at Bonnechere Caves. Continue east on Highway 60 and 417 towards the Sir John A. Macdonald Parkway. This scenic parkway follows the Ottawa River towards Ottawa and ends at the city's Canadian War Museum and National Holocaust Monument.

### Nearby campgrounds:

Wesley Clover Campground or Rideau Heights Campsite

## Day 4: Ottawa to Montreal (200 km)

Route 148 offers spectacular views of the Ottawa River, as it follows the north bank of the river. Later it parallels the Eardley Escarpment, this ridge forms the southernmost boundary of Gatineau Park. In spring, Parc National de Plaisance puts on a performance with thousands of Canadian Geese. Come summer, it's a paradise for ducks, herons, ospreys, and dozens of other species. In Montebello, Manoir Papineau is the grand estate of Louis-Joseph Papineau, the man who was to become a leading figure in Canadian politics. Flanked by four towers, the manor house rules over its surrounding landscape with its landscaped garden, spacious lawns, wooded areas and a stream.

### Nearby campgrounds:

KOA Montreal South or Camping Alouette

## Day 5: Montreal to Mont Tremblant (150 km)

Today you will be provided with some beautiful scenery as you travel through the Laurentian Mountains. Stop in Sainte-Agathe-des-Monts and discover the many attractions and activities the city has to offer. In the fall you can visit the Cabane à sucre Nantel just north of Saint-Jérôme to see firsthand how maple syrup is made.

### Nearby campgrounds:

La Labelle et la Rouge or Parc La Conception

## Day 6: Mont Tremblant to Lac La Vieille (175 km)

Just north of Mont Tremblant at the Green Mountain Nature Reserve visitors can marvel at the myriad of ecosystems that provides habitat for large mammals such as black bear, moose and bobcat. Visit the visitor information centre in Mont-Laurier to help you plan your stops for today and tomorrow. Just before arriving at Lac la Vieille Highway 117 will take you across the Chute du Brûlé.

### Nearby campgrounds:

Lac de la Vieille



**Day 7: Lac la Vieille to Val d’Or (225 km)**

With over 4,000 lakes, there is water aplenty in Réserve faunique La Vérendrye. Stop at the Chutes du Lac Roland where a trail with interpretive panels will inform you about the adaptation of animals and plants to their environment and about the Algonquin Nation. Stop at the visitor centre in Val-d’Or to learn more about the city’s historic circuit driving tour.

**Nearby campgrounds:**  
Camping Sagittaire 2001 or  
Camping Le Nid D’Aigle

**Day 8: Val d’Or to Lac Baby (175 km)**

In the morning, enjoy a unique opportunity to experience the mining profession. Wear the mining security equipment and go on board a genuine mining vehicle before you go 300 feet (91 meters) underground in the historic Lamaque’s mine! Downtown Rouyn-Noranda is home to the Parc Botanique-A Fleur D’Eau, a garden of more than 25,000 plants, trees and shrubs. Just southwest of Rouyn-Noranda the ‘Footpaths of Kékéko Hills’ offers 15 hiking trails totaling over 43 km in distance.

**Nearby campgrounds:**  
Camping Le P’tit Paradis

**Day 9: Lac Baby to Lake Nipissing (200 km)**

Start the day with a visit to the Obadjiwan–Fort Témiscamingue National Historic Site, about 35 km south of your campsite. Fort Témiscamingue is a fur trading post from the 17th century. Of the fort itself, not much remained, but a modern visitor’s centre, exhibits, and reenactments highlight the cultural history of the place.

**Nearby campgrounds:**  
Fairview Park or Champlain  
RV Park

**Day 10: Lake Nipissing to Gravenhurst (175 km)**

Arrowhead Provincial Park is the perfect stop for hikers and birders. Several species of birds make Arrowhead their home in the spring and summer months, before migrating south for the winter. A bird list is available at the main gate.

**Nearby campgrounds:**  
Gravenhurst KOA or Muskoka  
Falls Campground

**Day 11: Gravenhurst to Toronto (100 km)**

Gravenhurst is known as the Gateway to the Muskoka region. Explore the town in the morning before your departure towards Cookstown and return your RV to the rental station before 11:30 am.



**Useful websites:**

[www.southeasternontario.ca](http://www.southeasternontario.ca)  
[www.ontarioparks.com](http://www.ontarioparks.com)

[www.algonquinpark.on.ca](http://www.algonquinpark.on.ca)  
[www.bonjourquebec.com](http://www.bonjourquebec.com)

[www.sepaq.com](http://www.sepaq.com)  
[www.discovermuskoka.ca](http://www.discovermuskoka.ca)

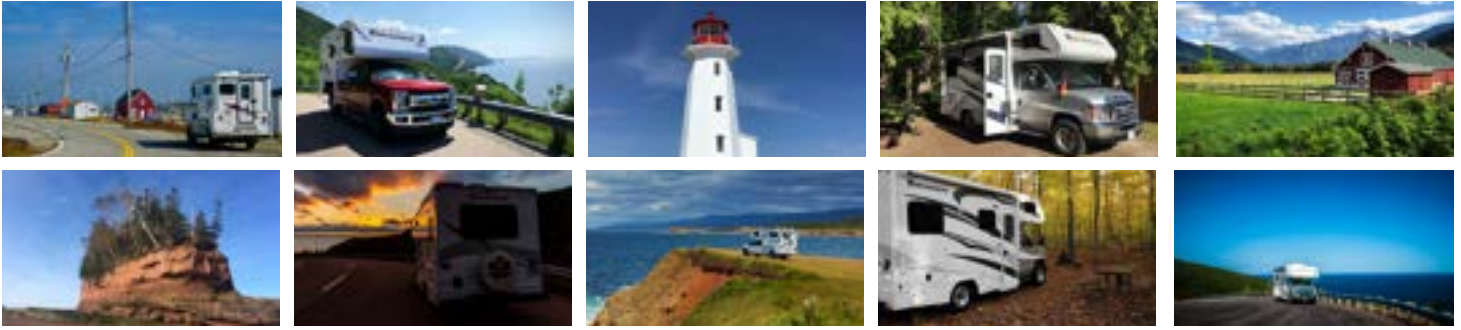
**Disclaimer:**

While we endeavour to keep the information up to date and correct, we make no representations or warranties of any kind, express or implied, about the completeness, accuracy, reliability, suitability, or availability. Any reliance you place on such information is therefore strictly at your own risk. Travellers are advised to confirm with each third party prior to arrival. The inclusion of any suggestions does not necessarily imply a recommendation or endorse the views expressed within them.



# THE BEST OF NOVA SCOTIA

**Rental Location:** Halifax **Duration:** 8 nights **Distance:** 1,750 km



## Day 1: Halifax to Lunenburg (150 km)

Pick up your RV in Bedford in the morning. Travel south on Peggy's Cove Road, passing through communities like French Village, Seabright and Glen Margaret along the shore of St Margaret's Bay. Peggy's Cove Lighthouse is arguably the most iconic landmark in Nova Scotia. Built in 1915, the lighthouse still keeps watch over surging ocean waves and working lobster boats. Explore the picturesque fishing village on foot. Continue to the town of Lunenburg via the scenic Lighthouse Route (Highway 3). Seventy percent of the original colonial buildings from the 18th and 19th centuries continue to greet visitors to Lunenburg with their colourful façades.

**Nearby campgrounds:**  
Lunenburg Campground or  
Little Lake Campground

## Day 2: Lunenburg to Kejimikujik National Park (200 km)

Depart Lunenburg in the morning and drive Highway 103 to Kejimikujik National Park. Note that the National Park consists of two separate locations, one on the seaside and one inland. Start off by visiting the Seaside location of the park. Here the Atlantic coast reveals its beauty with white sand beaches, turquoise water, and lagoons that provide nurseries for all sorts of sea life. Continue to the Inland location of the park in the afternoon where you will spend the night.

**Nearby campgrounds:**  
Jeremys Bay Campground

## Day 3: Kejimikujik National Park to Burntcoat Head Park (300 km)

Depart the National Park via Highway 8 to reach Port-Royal National Historic Site, where you will experience the early 17th century lifestyle. From here the Harvest Highway (Highway 101) takes you further east. Depart the highway at exit 5 near Currys Corner to merge onto the Glooscap Trail. Spend the night near Burntcoat Head Park, which you can explore either this afternoon or the following morning.

**Nearby campgrounds:**  
Whale Creek or Parkville  
Campground

## Day 4: Burntcoat Head Park to Cape Breton Highlands National Park (365 km)

Travel the Trans-Canada Highway to the Eastern tip of the Nova Scotia peninsula. From here the Canso Causeway connects the Nova Scotia peninsula by road to Cape Breton Island. Stop at the Chéticamp Visitor Centre near the southeastern entrance to Cape Breton Highlands National Park for assistance planning your scenic drive tomorrow.

**Nearby campgrounds:**  
Cheticamp or Corney Brook  
Campground

## Day 5: Cape Breton Highlands National Park to Meat Cove (100 km)

Spent the day exploring the west side of Cape Breton Highlands National Park, with stops at Trout Brook, the Whale Interpretive Centre in Pleasant Bay and the MacIntosh Brook Trail. Enjoy an eagle's view of the Cabot Trail by hiking the 7-km Skyline Trail. Moose, bald eagles, bears and numerous boreal birds call this area home and don't forget to keep an eye out for whales in the water below. Arrive at Meat Cove in the afternoon, a beautiful fishing village located on the northern tip of Cape Breton Island.

**Nearby campgrounds:**  
Meat Cove or Hide Away  
Campground



**Day 6: Meat Cove to Baddeck (175 km)**

Depart Meat Cove and continue along the east side of Cape Breton Highlands National Park towards Baddeck. Stop at Cape Smoke Provincial Park on top of Smokey Mountain for a nice rest area with picnic tables and spectacular views. Those looking to challenge themselves on a longer and more challenging hike can hike the 18 km return trip to North River Falls instead. Arrive in Baddeck in the late afternoon.

**Nearby campgrounds:**  
Baddeck Cabot Trail Campground or Bras d'Or Lakes

**Day 7: Baddeck to Louisbourg (125 km)**

Travel from Baddeck to Louisbourg via the Peacekeepers Way (Highway 125). The Fortress of Louisbourg brings you back to French colonial life between 1713 and 1758. Louisbourg was a major fishing centre and cosmopolitan town situated on the trade routes between North America and Europe. Use the entire day to explore this spectacular Fortress!

**Nearby campgrounds:**  
Riverdale RV Park or Two Rivers Wildlife Park

**Day 8: Louisbourg to Tangier (275 km)**

Leave the Trans-Canada Highway near Antigonish and continue south on Nova Scotia Trunk Highway 7. The historic Sherbrooke Village depicts a typical Nova Scotian village from 1860 to pre-WW1. With approximately 80 buildings, over 25 of those open to the public, most with costumed interpreters, it is the largest Nova Scotia Museum site. Arrive at your campsite in Liscomb in the late afternoon.

**Nearby campgrounds:**  
Murphy's Camping on the Ocean

**Day 9: Tangier to Halifax (100 km)**

Depart Murphy's Cove towards Memory Lane Heritage Village, an award-winning living history museum depicting coastal rural life in Nova Scotia during the 1940s, including life during and after the Second World War. Return your RV to Fraserway RV in Bedford by 11.30 am.



**Useful websites:**

[www.novascotia.ca](http://www.novascotia.ca)  
[www.parkscanada.ca](http://www.parkscanada.ca)

[www.peggyscoveregion.com](http://www.peggyscoveregion.com)  
[www.explorelunenburg.ca](http://www.explorelunenburg.ca)

[www.cbisland.com](http://www.cbisland.com)

**Disclaimer:**

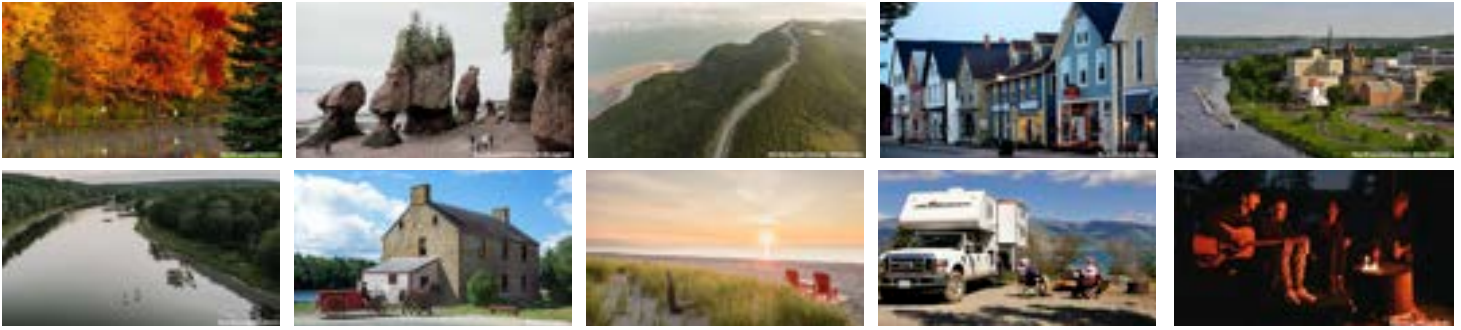
While we endeavour to keep the information up to date and correct, we make no representations or warranties of any kind, express or implied, about the completeness, accuracy, reliability, suitability, or availability. Any reliance you place on such information is therefore strictly at your own risk. Travellers are advised to confirm with each third party prior to arrival. The inclusion of any suggestions does not necessarily imply a recommendation or endorse the views expressed within them.





# HIGHLIGHTS OF NEW BRUNSWICK

**Rental Location:** Halifax **Duration:** 8 nights **Distance:** 1,700 km



## Day 1: Bedford to Moncton (275 km)

Pick up your RV at Fraserway RV in Bedford in the morning and travel north on the Veteran's Memorial Highway (Highway 102), until just north of Truro, where you will merge onto the Trans-Canada Highway (Highway 104). Visit the historic battleground with remnants of an 18th-century Fort Beauséjour — Fort Cumberland. Located on the border between New Brunswick and Nova Scotia, the fort depicts the 18th century conflicts between France and Britain, and the later struggle between the American and Britain empires.

### Nearby campgrounds:

Hidden Hilltop or Scotia Pine Campground

## Day 2: Moncton to Alma (100 km)

Depart your campsite in the morning and travel towards Hopewell Rocks via Highway 114. The best way to experience Hopewell Rocks is a beach walk along the ocean's floor among the flowerpot-like formations. From here continue via Highway 114 and 915 to Mary's Point. This is a prime habitat of the Sandpiper, a small, arctic-nesting shorebird. Up to 85% of the world's population of this species stop over in the area during their yearly migration in July-August to 're-fuel' before making their way to South America to spend the winter. Further south on Highway 915 you will find the 150 year old Cape Enrage Lighthouse. Cape Enrage is so named for the turbulent waters that pass over the reef.

### Nearby campgrounds:

Headquarters Campground or Point Wolfe Campground

## Day 3: Alma to St. Martins (100 km)

Depart Alma in the morning and travel west on Highway 114 towards the town of Waterford. From here travel south towards the newly constructed Fundy Trail Connector (Little Salmon River Road) to reach the east entrance of the Fundy Parkway. The Fundy Trail is a 2,559 hectare park featuring a 30 km Parkway hugging the southern coast of New Brunswick. Highlights along the way include Fox Rock, the Flowerpot Rock scenic footpath, Fuller Falls, the suspension footbridge and Longbeach Lookout, but there are countless other places worth stopping at!

### Nearby campgrounds:

Century Farm Campground or Fundy Woods Campground

## Day 4: St. Martins to St. Andrews (160 km)

Depart St. Martins in the morning and travel westbound towards New River Beach Provincial Park. The beaches and coastal trails at New River Beach abound with spectacular evidence of the natural formation of the bay's high tides. Wade in the tidal pools, search for crabs, periwinkles, whelks and starfish. Roughly 60 km further west the St. George Falls are worth a visit. Your destination for today is the historic town of St. Andrews. Founded by United Empire Loyalists fleeing the American Revolution, many of the Town's buildings still reflect that history as you will see along Water Street.

### Nearby campgrounds:

Oceanfront Camping or Island View Campground

## Day 5: St. Andrews to Fredericton (130 km)

Depart St. Andrews in the morning and travel northbound towards Fredericton via Highway 127 and Highway 3. Follow the southern shoreline of the Saint John River, eastern Canada's longest river towards Fredericton. New Brunswick's capital city Fredericton is steeped in history and provides countless activities to choose from. Spend the afternoon downtown, or travel 35 km west to King's Landing, where a world where history comes to life. This open-air museum offers over 40 exhibits, horseback riding, hands-on workshops, dining, shopping, as well as a 19th century village full of costumed characters, farm animals and their incredible stories.

### Nearby campgrounds:

Hartt Island RV Resort or Heritage Country



**Day 6: Fredericton to Caraquet (325 km)**

Depart Fredericton via the northbound Highway 148 for about 25 km. Leave the highway near the settlement of Durham Bridge to enter the Miramichi River Route (Highway 8), one of New Brunswick's most scenic drives. It is in this mighty free-flowing river where you will find the largest salmon run in north-eastern North America. You will follow the river for 180 km downstream to reach the town of Miramichi. Along the way stop at the Priceville suspension footbridge and one or more of the small communities along the route.

**Nearby campgrounds:**  
Colibri Sur Mer or Camping Colibri

**Day 7: Caraquet to Kouchibouguac National Park (175 km)**

The Acadian Coastal Drive (Highway 11) is another of New Brunswick's most scenic drives. Follow the shoreline of the Gulf of St. Lawrence as you make your way south. A tour of MacDonald Farm, in the company of costumed guides, will take you back to the 1820s when the family of Scottish settler, Alexander MacDonald, helped to develop the area. Further south Kouchibouguac National Park features various diverse natural habitats including forest, marshes, bogs, dunes, estuaries, and rivers. Discover for yourself why the park's slogan is "difficult to pronounce, impossible to forget".

**Nearby campgrounds:**  
South Kouchibouguac or Côte-à-Fabien campground

**Day 8: Kouchibouguac National Park to Truro (250 km)**

Continue your trip south along the Acadian coast towards Truro. A stop at La Dune de Bouctouche can't be missed. The fine sand dune extends 12 km into Bouctouche Bay and was created by the constant movement of sand due to the wind, tides, and ocean currents since the last ice age. The dune, estimated to be 2,000 years old, changes shape with every major storm. Arrive in the afternoon in Truro and enjoy the historic downtown's unique shops and dining options or visit Victoria Park

**Nearby campgrounds:**  
Hidden Hilltop or Scotia Pine Campground

**Day 9: Truro to Halifax (100 km)**

Depart Truro in the morning and return your RV to Fraserway RV in Bedford by 11:30 am.



**Useful websites:**

[www.parkscanada.ca](http://www.parkscanada.ca)  
[www.tourismnewbrunswick.ca](http://www.tourismnewbrunswick.ca)

[www.fundytrailparkway.com](http://www.fundytrailparkway.com)  
[www.thehopewellrocks.ca](http://www.thehopewellrocks.ca)

[www.tourismfredericton.ca](http://www.tourismfredericton.ca)  
[www.experiencemoncton.ca](http://www.experiencemoncton.ca)

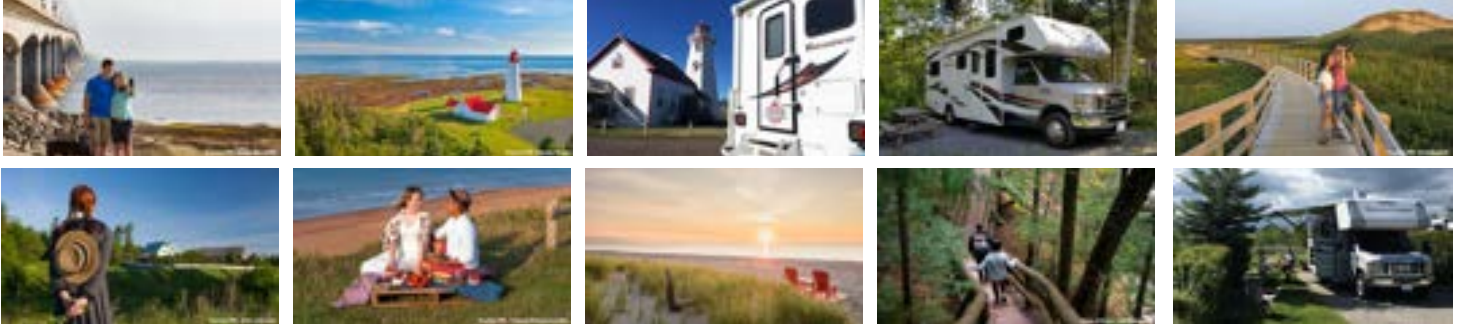
**Disclaimer:**

While we endeavour to keep the information up to date and correct, we make no representations or warranties of any kind, express or implied, about the completeness, accuracy, reliability, suitability, or availability. Any reliance you place on such information is therefore strictly at your own risk. Travellers are advised to confirm with each third party prior to arrival. The inclusion of any suggestions does not necessarily imply a recommendation or endorse the views expressed within them.



# PRINCE EDWARD ISLAND AND THE ACADIAN COAST

**Rental Location:** Halifax **Duration:** 8 nights **Distance:** 1,600 km



## Day 1: Bedford to Port Borden (275 km)

Pick up your RV in Bedford in the morning and travel north on the Veteran's Memorial Highway (Highway 102), until just north of Truro, where you will merge onto the Trans-Canada Highway (Highway 104) towards Amherst, NB. Turn onto Hwy 16 towards Prince Edward Island. The Confederation Bridge is the longest bridge in the world crossing ice-covered water. The toll bridge (toll only applies when you leave the Island) spans a nearly 13 km stretch of the Northumberland Strait.

### Nearby campgrounds:

Cape Tormentine Beach or Borden Summerside KOA

## Day 2: Port Boden to Murray Harbour (160 km)

Start your day by exploring Charlottetown, the capital city of Prince Edward Island and the birthplace of Canada. Enjoy the arts and culture or get a taste of local groceries at the farmer's market. Head out east on Hwy 1 and do not miss to stop at the very important Point Prim Lighthouse. As the sea trade between Canada and Europe rapidly increased in the early 19th century, so did the shipwrecks. A demand for a guiding beacon into the Charlottetown harbour was needed. Enjoy an evening walk to the historic Confederation Trail and the former "last stop" of the PEI Railway in Murray Harbour.

### Nearby campgrounds:

Somers by the Beach or Ocean Acres Campground

## Day 3: Murray Harbour to Fairfield (175 km)

Depart Murray Harbour and continue on Hwy 17 to enjoy panoramic views from PEI's oldest Lighthouse on Panmure Island. Step back in time to visit Jean Pierre Roma's 1730's recreated trading post, where history comes alive at "Roma At Three Rivers National Historic Site at the Brudenell Point". Another highlight of the day is the East Point Lighthouse, known as "Canada's Confederation Lighthouse", the only lighthouse in Canada that was built in 1867 and still operates today.

### Nearby campgrounds:

Campbell's Cove or All Point East Campground

## Day 4: Fairfield to Cavendish (125 km)

After departing Fairfield today, it is all about the coast and endless sandy beaches. Visit the Greenwich National Park Interpretation Center or escape to a truly unique landscape in the park. It has the largest dunes on the Island with boardwalks and trails that roll across the marshes and grass-like something out of an illustrated book. Continue to the Green Gables shore. The beauty of the landscape was the source of inspiration of Anne of Green Gables creator Lucy Maud Montgomery.

### Nearby campgrounds:

Cavendish Campground or White Sands

## Day 5: Anne of Green Gables (70 km)

Today is all about the history and influence this Island had on Montgomery and how it reflected on the character "Anne". Start with the inspiration of the House itself at Green Gables Heritage Place, where the Novel was based on. Check out the Anne of Green Gables Museum which offers you "Matthew's carriage" ride around the property and the shore. Go back in time to where it all started by visiting Lucy Maud Montgomery's birthplace in New London.

### Nearby campgrounds:

Cavendish Campground or White Sands

## Day 6: Cavendish to Waterford (175 km)

Depart Cavendish and follow the North Cape Coastal Drive. It is a medley of naturally sifted white and red sand beaches, towering red sandstone capes and iconic Lighthouses. Enjoy a winding drive through farming and fishing communities infused with Acadian, Mi'kmaq and Celtic heritage and culture. Visit North Cape, the tip of the longest natural rock reef in North America.

### Nearby campgrounds:

Cedar Dunes Provincial Park or Jacques Cartier Provincial Park



Experience the Black Marsh Nature Trail, winding through a wind-blown forest, along the red capes and across a vast bog. You will see seabirds, dragonflies, and the Elephant Rock like it stands today. The Wind Energy Interpretive Center educates visitors about wind energy and the colorful history of North Cape.

**Day 7: Waterford to Kouchibouguac National Park(275 km)**

Today you are leaving the Island but not before visiting the glass bottle houses and gardens in Cap-Egmont on Hwy 11. Travel further to Summerside, today the second-largest city on the Island but also steeped in trade and shipbuilding history growing from a mere lot of land in 1800. Leave the island via Highway 10 and the Confederation Bridge and continue your trip along the Acadian coast towards Kouchibouguac. Kouchibouguac National Park features various diverse natural habitats including forest, marshes, bogs, dunes, estuaries, and rivers. Discover for yourself why the park’s slogan is “difficult to pronounce, impossible to forget”.

**Nearby campgrounds:**  
South Kouchibouguac or Côte-à-Fabien campground

**Day 8: Kouchibouguac National Park to Truro (250 km)**

Depart Kouchibouguac and travel south along the Acadian coast. The fine sand dune extends 12 km into Bouctouche Bay and was created by the constant movement of sand due to the wind, tides, and ocean currents since the last ice age. The dune changes shape with every major storm. Visit the historic battleground with remnants of an 18th-century Fort Beauséjour — Fort Cumberland. Located on the border between New Brunswick and Nova Scotia, the fort depicts the 18th century conflicts between France and Britain, and the later struggle between the American and Britain empires. Truro offers you a historic downtown with unique shops and dining options.

**Nearby campgrounds:**  
Hidden Hilltop or Scotia Pine Campground

**Day 9: Truro to Bedford (100 km)**

Depart Truro in the morning and return your RV to Fraserway RV in Bedford by 11:30 am.



**Useful websites:**  
[www.parkscanada.ca](http://www.parkscanada.ca)  
[www.tourismpei.com](http://www.tourismpei.com)

[www.novascotia.com](http://www.novascotia.com)  
[www.cavendishbeachpei.com](http://www.cavendishbeachpei.com)

[www.exploresummerside.com](http://www.exploresummerside.com)

**Disclaimer:**  
While we endeavour to keep the information up to date and correct, we make no representations or warranties of any kind, express or implied, about the completeness, accuracy, reliability, suitability, or availability. Any reliance you place on such information is therefore strictly at your own risk. Travellers are advised to confirm with each third party prior to arrival. The inclusion of any suggestions does not necessarily imply a recommendation or endorse the views expressed within them.





**Vancouver (Delta)**

747 Cliveden Place  
Delta, BC V3M 6C7  
Phone: 604 527 1102  
Toll Free\*: 1 800 661 2441

**Calgary (Airdrie)**

536 Kingsview Way SE  
Airdrie, AB T4A 0B3  
Phone: 403 948 8492  
Toll Free\*: 1 877 782 3434

**Edmonton (Leduc)**

7714 Sparrow Drive  
Leduc, AB T9E 8A5  
Phone: 780 980 1188  
Toll Free\*: 1 877 980 1188

**Whitehorse**

9039 Quartz Road  
Whitehorse, YK Y1A 4Z5  
Phone: 867 668 3438  
Toll Free\*: 1 866 269 2783

**Toronto (Cookstown)**

5362 County Road 27 N  
RR#1, Cookstown, ON L0L 1L0  
Phone: 705 458 0001  
Toll Free\*: 1 866 691 1115

**Halifax (Bedford)**

726 Rocky Lake Drive  
Bedford, NS B4A 2T7  
Phone: 902 404 3754  
Toll Free\*: 1 800 263 5558

\*Toll Free available for North American numbers only.



**Fraserway RV**

